

WAAS CH 97538 W13A	APP CRS 138°	Rwy Idg TDZE Apt Elev	5101 1910 1910
--	------------------------	-----------------------------	---

RNAV (GPS) RWY 13

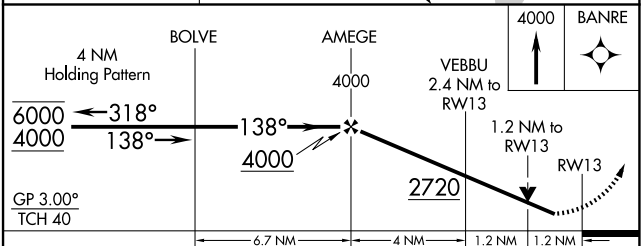
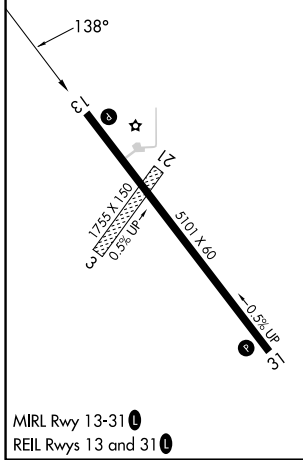
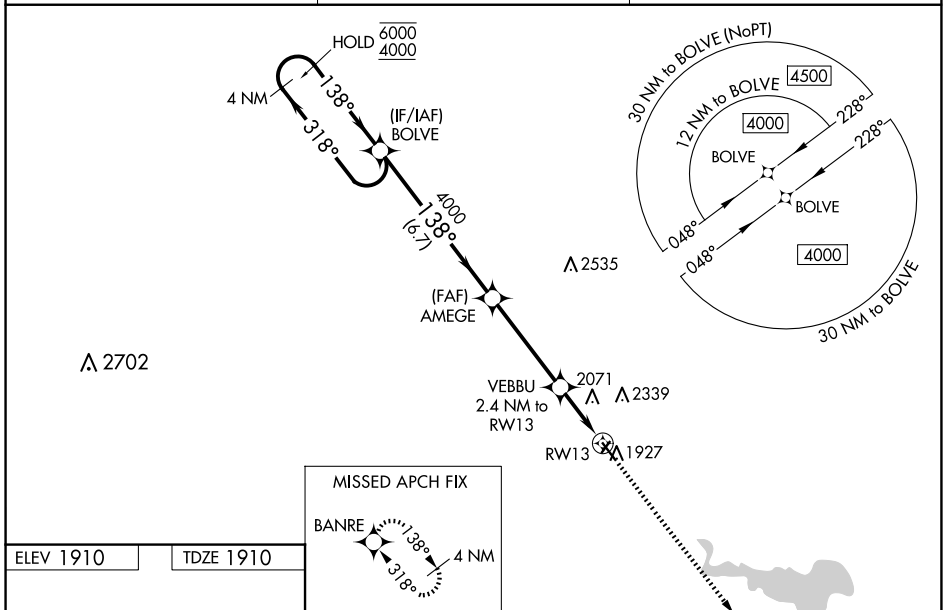
PHILLIPSBURG MUNI (PHG)

RNP APCH - GPS.

NA Rwy 13 helicopter visibility reduction below $\frac{3}{4}$ SM NA. Circling NA northeast of Rwy 13-31. For uncompensated Baro-VNAV systems, LNAV/VNAV NA below -18°C or above 54°C. Circling NA to Rwy 3 and 21. Baro-VNAV and VDP NA when using HYS altimeter setting. When local altimeter setting not received, use HYS altimeter setting and increase LPV DA to 2296 feet and all visibilities $\frac{1}{8}$ SM. Increase LNAV/VNAV DA to 2497 feet and all visibilities $\frac{3}{8}$ SM. Increase all MDAs 140 feet and LNAV visibility Cat C $\frac{3}{8}$ SM, and Circling visibility Cat C $\frac{1}{4}$ SM.

MISSED APPROACH: Climb to 4000 direct BANRE and hold.

AWOS-3PT 119.125	DENVER CENTER 132.7 226.675	UNICOM 122.8 (CTAF) 0
----------------------------	---------------------------------------	---------------------------------



CATEGORY	A	B	C	D
LPV DA	2160-1		250 (300-1)	NA
LNAV/VNAV DA	2361-1 $\frac{3}{8}$		451 (500-1 $\frac{3}{8}$)	NA
LNAV MDA	2340-1	430 (500-1)	2340-1 $\frac{1}{4}$ 430 (500-1 $\frac{1}{4}$)	NA
C CIRCLING	2340-1 430 (500-1)	2360-1 450 (500-1)	2380-1 $\frac{1}{2}$ 470 (500-1 $\frac{1}{2}$)	NA

NC-2, 15 MAY 2025 to 12 JUN 2025

NC-2, 15 MAY 2025 to 12 JUN 2025