

| | | |
|--|------------------------|---|
| VORTAC ARG 114.5 Chan 92 | APP CRS 197° | Rwy Idg 5002 TDZE 239 Apt Elev 239 |
|--|------------------------|---|

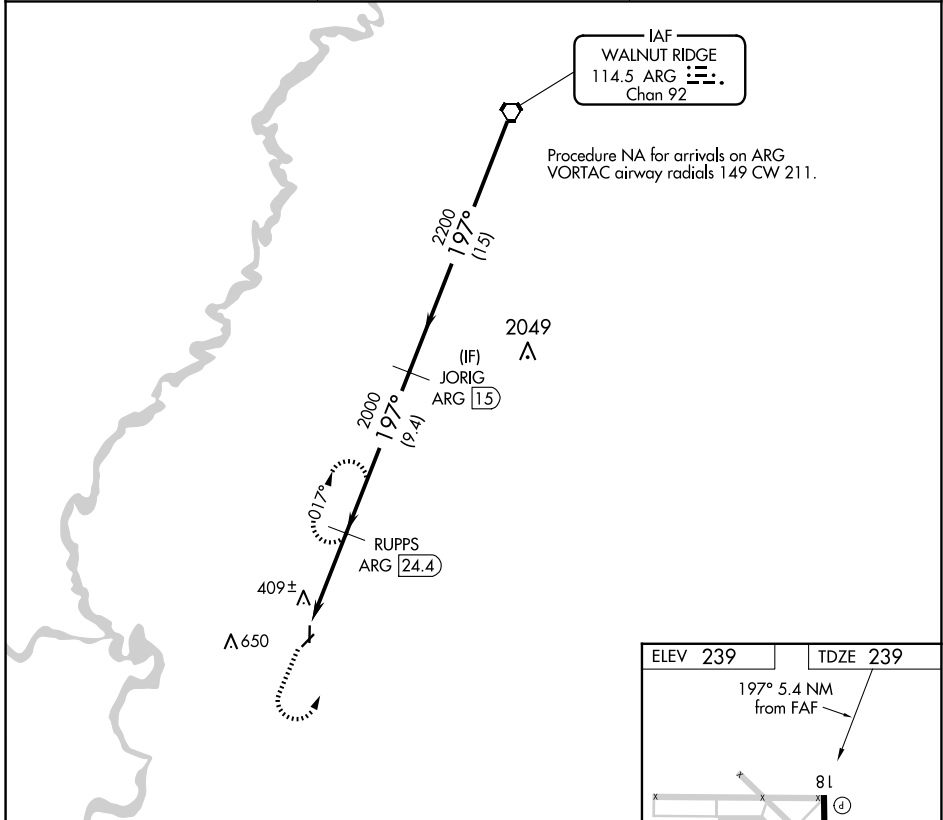
VOR RWY 18

NEWPORT RGNL (M19)

⚠ When local altimeter setting not received, use Batesville altimeter setting and increase all MDAs 100 feet.
⚠ DME required.

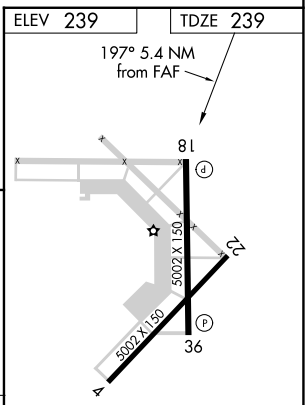
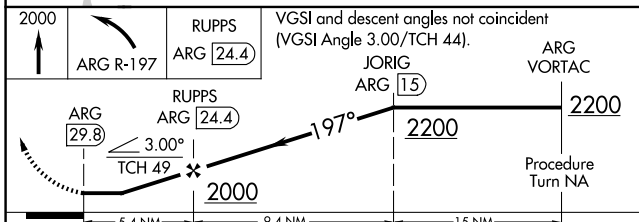
MISSED APPROACH: Climb to 2000 then left turn on ARG VORTAC R-197 to RUPPS/24.4 DME and hold.

| | | |
|---------------------------|--|--|
| AWOS-3PT 118.15 | MEMPHIS CENTER 120.075 289.4 | UNICOM 122.8 (CTAF) 📻 |
|---------------------------|--|--|



SC-1, 15 MAY 2025 to 12 JUN 2025

SC-1, 15 MAY 2025 to 12 JUN 2025



| CATEGORY | A | B | C | D |
|----------|---------------------------|---------------------------|--------|---------------|
| S-18 | 1300-1¼ 1061 (1100-1¼) | 1300-1½ 1061 (1100-1½) | 1300-3 | 1061 (1100-3) |
| CIRCLING | 1300-1¼ 1061 (1100-1¼) | 1300-1½ 1061 (1100-1½) | 1300-3 | 1061 (1100-3) |

REIL Rwy 18 and 36
 MRL Rwy 18-36 **📻**