

VORTAC PGY 116.45 Chan 111 (Y)	APP CRS 156°	Rwy Idg TDZE Apt Elev	N/A N/A 526
--	------------------------	-----------------------------	--

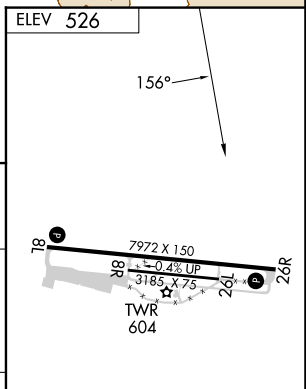
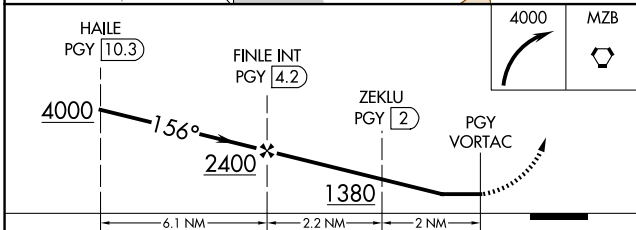
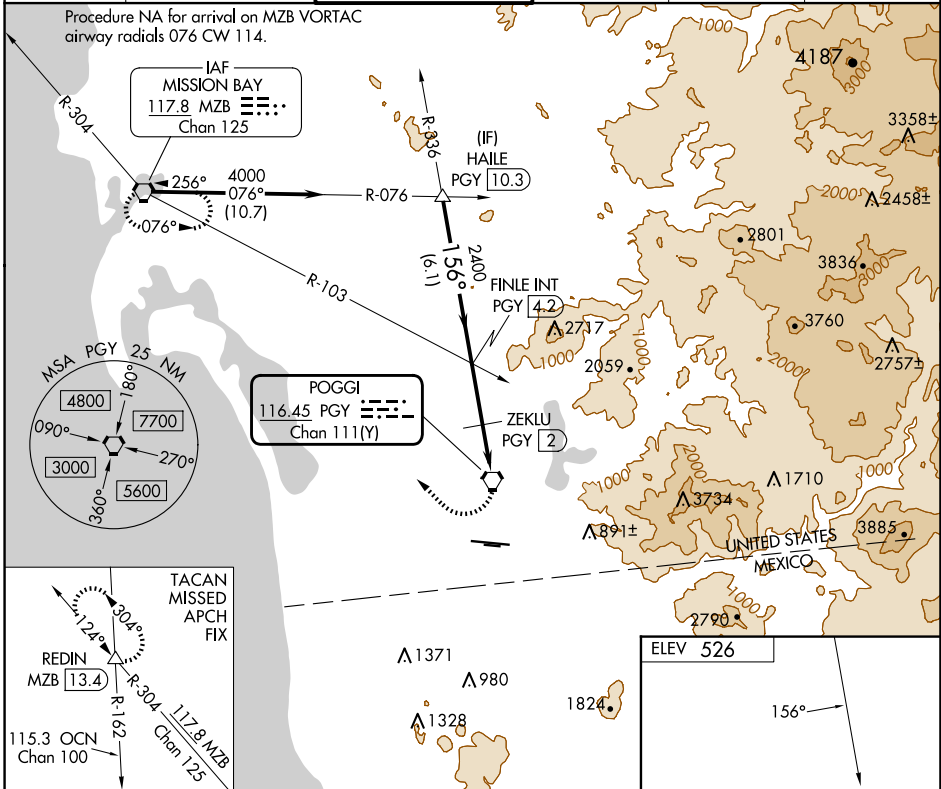
VOR or TACAN-A

BROWN FLD MUNI (SDM)

⚠ Circling NA south of Rwy 8R-26L.

MISSED APPROACH: Climbing right turn 4000 to MZB VORTAC and hold. (TACAN aircraft continue on MZB VORTAC R-304 to REDIN INT/MZB VORTAC 13.4 DME and hold NW, LT, 124° inbound)

ATIS 132.35	SOCAL APP CON 124.35 279.625	BROWN TOWER * 128.25 (CTAF) 0 225.4	GND CON 124.4	CLNC DEL 124.4	UNICOM 122.95
-----------------------	--	---	-------------------------	--------------------------	-------------------------



CATEGORY	A	B	C	D
C CIRCLING	1380-2 ³ / ₄	854 (900-2 ³ / ₄)		2260-3 1734 (1800-3)
ZEKLU FIX MINIMUMS (DME REQUIRED)				
C CIRCLING	1140-2 ³ / ₄	614 (700-2 ³ / ₄)	1340-2 ³ / ₄ 814 (900-2 ³ / ₄)	2260-3 1734 (1800-3)

REIL Rwy 26R
REIL Rwy 8L **0**
MIRL Rwy 8R-26L **0**
HIRL Rwy 8L-26R **0**

SW-3, 15 MAY 2025 to 12 JUN 2025

SW-3, 15 MAY 2025 to 12 JUN 2025