

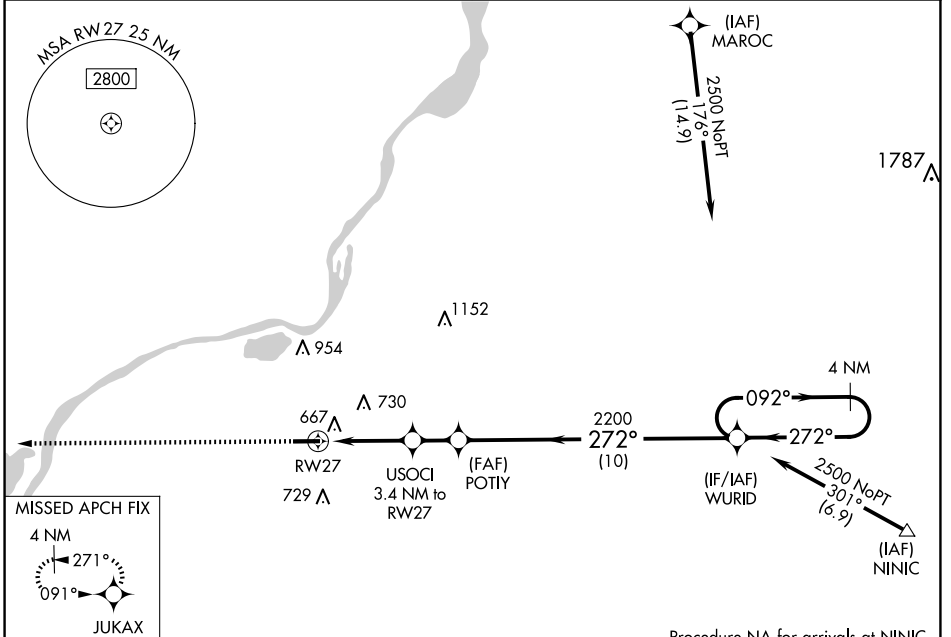
WAAS CH 99509 W27A	APP CRS 272°	Rwy Idg TDZE 5000 525 Apt Elev 530
--	------------------------	--

RNAV (GPS) RWY 27

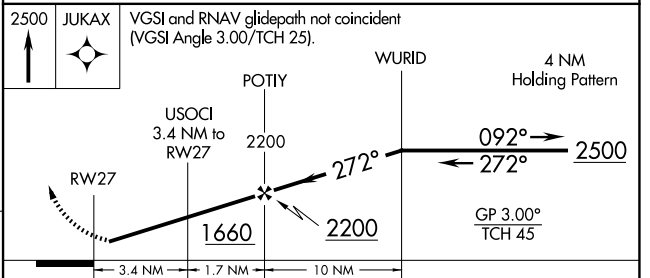
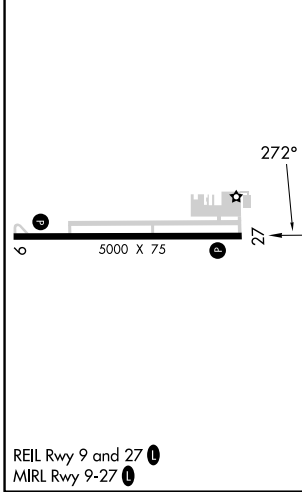
PEKIN MUNI (C15)

RNP APCH-GPS ▼ ▲ NA	Baro-VNAV NA. Rwy 27 helicopter visibility reduction below 1 SM NA. Use General Downing - Peoria Intl altimeter setting: when not received use Lincoln altimeter setting; increase LPV DA to 889 feet; increase LNAV/VNAV DA to 1035 feet; increase all MDAs 40 feet and LNAV visibility Cat C/D 1/8 SM and Circling visibility Cat C 1/4 SM.	MISSED APPROACH: Climb to 2500 direct JUKAX and hold.
---------------------------	---	---

SAINT LOUIS APP CON 125.8 269.2	UNICOM 122.8 (CTAF) 0
---	---------------------------------



ELEV 530	TDZE 525
-----------------	-----------------



CATEGORY	A	B	C	D
LPV DA	864-1		339 (400-1)	
LNAV/VNAV DA	1010-1 3/8		485 (500-1 3/8)	
LNAV MDA	1020-1	495 (500-1)	1020-1 3/8	495 (500-1 3/8)
CIRCLING	1060-1	530 (600-1)	1100-1 1/2 570 (600-1 1/2)	1360-2 3/4 830 (900-2 3/4)

EC-3, 15 MAY 2025 to 12 JUN 2025

EC-3, 15 MAY 2025 to 12 JUN 2025