

WAAS CH <b>86543</b> <b>W04A</b>	APP CRS <b>044°</b>	Rwy Idg TDZE Apt Elev	<b>5001</b> <b>978</b> <b>979</b>
--	------------------------	-----------------------------	---

# RNAV (GPS) RWY 4

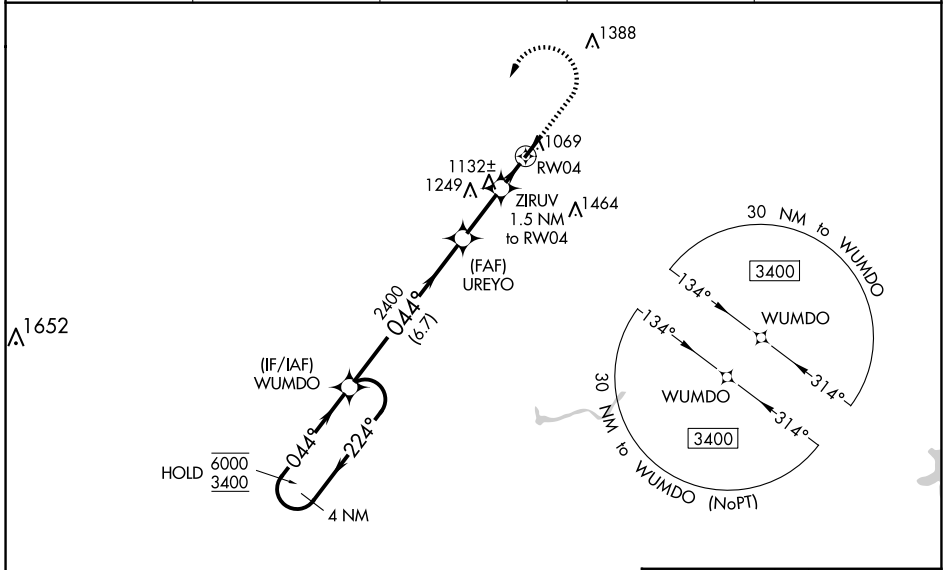
RICHARD DOWNING (I4 $\emptyset$ )

RNP APCH.

**⚠** Rwy 4 helicopter visibility reduction below  $\frac{3}{4}$  SM NA. Baro-VNAV NA when using Zanesville altimeter setting. For uncompensated Baro-VNAV systems, LNAV/VNAV NA below  $-16^{\circ}\text{C}$  or above  $48^{\circ}\text{C}$ . When local altimeter setting not received, use Zanesville altimeter setting and increase LPV DA to 1344 feet, increase LNAV/VNAV DA to 1310 feet, increase all MDA 80 feet and LPV and LNAV/VNAV visibility  $\frac{1}{2}$  SM, LNAV Cat C/D visibility  $\frac{1}{4}$  SM, and Circling Cat C/D visibility  $\frac{1}{2}$  SM.

**MISSED APPROACH:** Climb to 1480 then climbing left turn to 3400 direct WUMDO and hold.

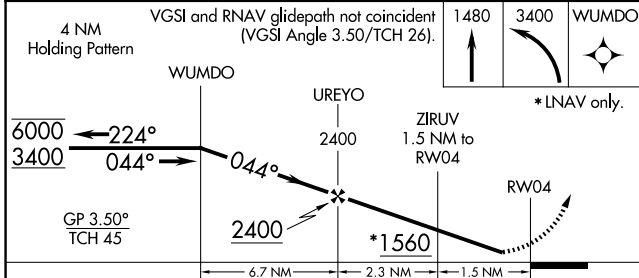
AWOS-3 <b>118.875</b>	INDIANAPOLIS CENTER <b>124.45 323.275</b>	GCO <b>121.725</b>	UNICOM <b>123.0</b> (CTAF)	<b>122.9</b> $\emptyset$
--------------------------	--	-----------------------	-------------------------------	--------------------------



EC-2, 15 MAY 2025 to 12 JUN 2025

EC-2, 15 MAY 2025 to 12 JUN 2025

ELEV 979	TDZE 978
----------	----------



CATEGORY	A	B	C	D
LPV DA		1282- $\frac{7}{8}$	304 (400- $\frac{7}{8}$ )	
LNAV/VNAV DA		1248- $\frac{7}{8}$	270 (300- $\frac{7}{8}$ )	
LNAV MDA	1400-1	422 (500-1)	1400-1 $\frac{1}{4}$	422 (500-1 $\frac{1}{4}$ )
<b>C</b> CIRCLING	1440-1 461 (500-1)	1500-1 521 (600-1)	1780-2 $\frac{1}{4}$ 801 (900-2 $\frac{1}{4}$ )	1780-2 $\frac{1}{2}$ 801 (900-2 $\frac{1}{2}$ )

