

APP CRS	Rwy Idg	4006
229°	TDZE	488
	Apt Elev	492

RNAV (GPS) RWY 23

BROOKHAVEN-LINCOLN COUNTY (1R7)

RNP APCH - GPS.

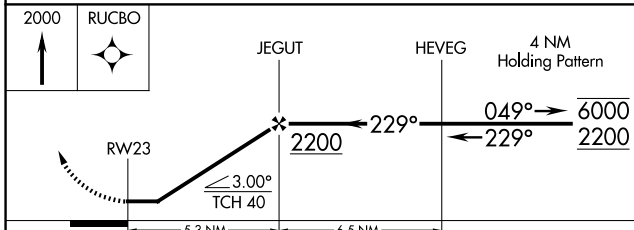
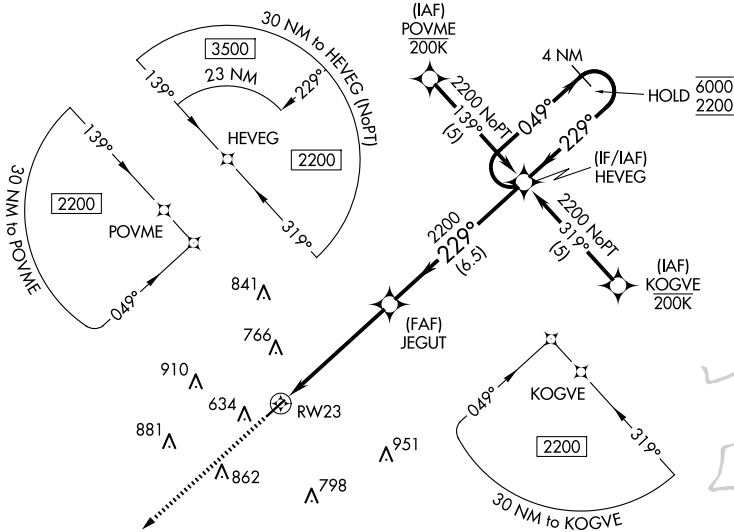
Procedure NA at night. Rwy 23 helicopter visibility reduction below 1 SM NA. When local altimeter setting not received, use McComb altimeter setting and increase all MDAs 80 feet; increase LNAV Cat C and Circling Cat C visibility ¼ SM.

MISSED APPROACH: Climb to 2000 direct RUCBO and hold.

AWOS-3T 118.125	HOUSTON CENTER 126.8 327.8	UNICOM 122.8 (CTAF) 0
---------------------------	--------------------------------------	---------------------------------

SC-4, 15 MAY 2025 to 12 JUN 2025

SC-4, 15 MAY 2025 to 12 JUN 2025



ELEV	492	TDZE	488
------	-----	------	-----

The diagram shows the RWY 23 approach path with a 5000 x 75 ft runway and a 542 ft obstacle. The approach path is shown with a 229° heading and a 2200 ft altitude.

CATEGORY	A	B	C	D
LNAV MDA	900-1	412 (500-1)	900-1½ 412 (500-1½)	NA
CIRCLING	940-1 448 (500-1)	1080-1 588 (600-1)	1220-2 728 (800-2)	NA

MIRL Rwy 5-23 0