

LOC/DME I-ISM 109.75 Chan 34 (Y)	APP CRS 153°	Rwy Idg TDZE Apt Elev	6001 82 82
------------------------------------------------------	------------------------	-----------------------------	---------------------------------------

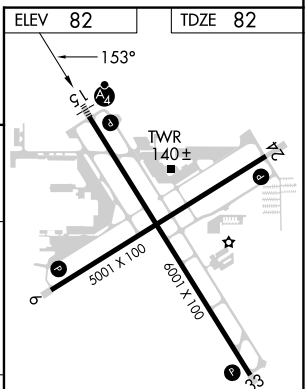
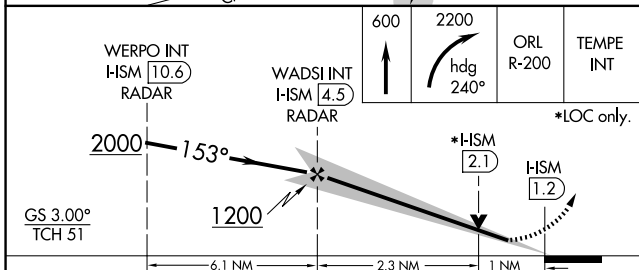
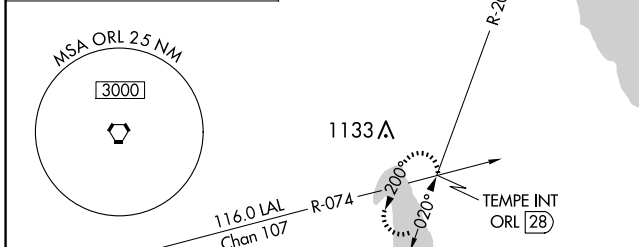
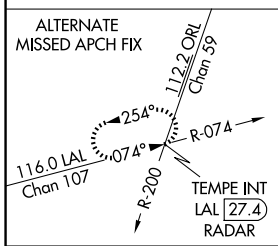
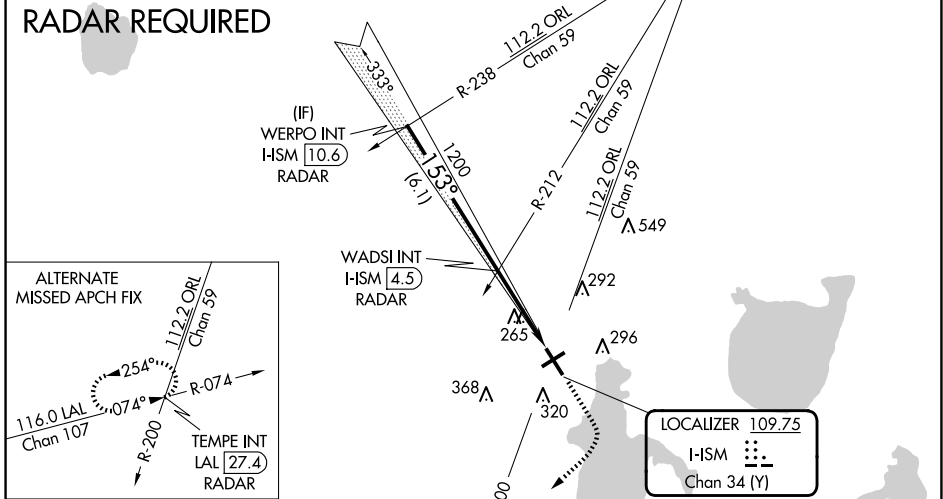
ILS or LOC RWY 15

KISSIMMEE GATEWAY (ISM)

<p>⚠ VDP NA with Orlando Intl altimeter setting. When local altimeter setting not received, use Orlando Intl altimeter setting and increase all DA to 309 feet, and all MDA 40 feet; increase Circling Cat C visibility 1/2 SM.</p>	MALSF	MISSED APPROACH: Climb to 600 then climbing right turn to 2200 on heading 240° and ORL VORTAC R-200 to TEMPE INT/ORL 28 DME and hold.

ATIS 128.775	ORLANDO APP CON 119.4 351.9	KISSIMMEE TOWER * 124.45 (CTAF) 0	CLNC DEL 121.7	CLNC DEL 123.95 (when twr closed)	GND CON 121.7	UNICOM 122.95
------------------------	---------------------------------------	----------------------------------------------------	--------------------------	------------------------------------------------	-------------------------	-------------------------

RADAR REQUIRED



GS 3.00° TCH 51	WERPO INT I-ISM 10.6 RADAR	WADSI INT I-ISM 4.5 RADAR	ORL R-200	TEMPE INT
	600	2200	hdg 240°	*LOC only.
	2000	153°	1200	H-ISM 2.1
	H-ISM 1.2			
CATEGORY	A	B	C	D
S-ILS 15	282-3/4 200 (200-3/4)			
S-LOC 15	440-3/4 358 (400-3/4)		440-1/4 358 (400-1/4)	
CIRCLING	680-1 598 (600-1)	680-1 1/2 598 (600-1 1/2)	700-2 618 (700-2)	

REIL Rwy 6, 24 and 33	MIRL Rwy 15-33 and 6-24
FAF to MAP 3.3 NM	
Knots	60 90 120 150 180
Min:Sec	3:18 2:12 1:39 1:19 1:06