

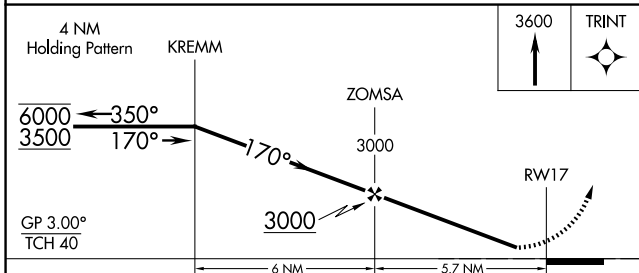
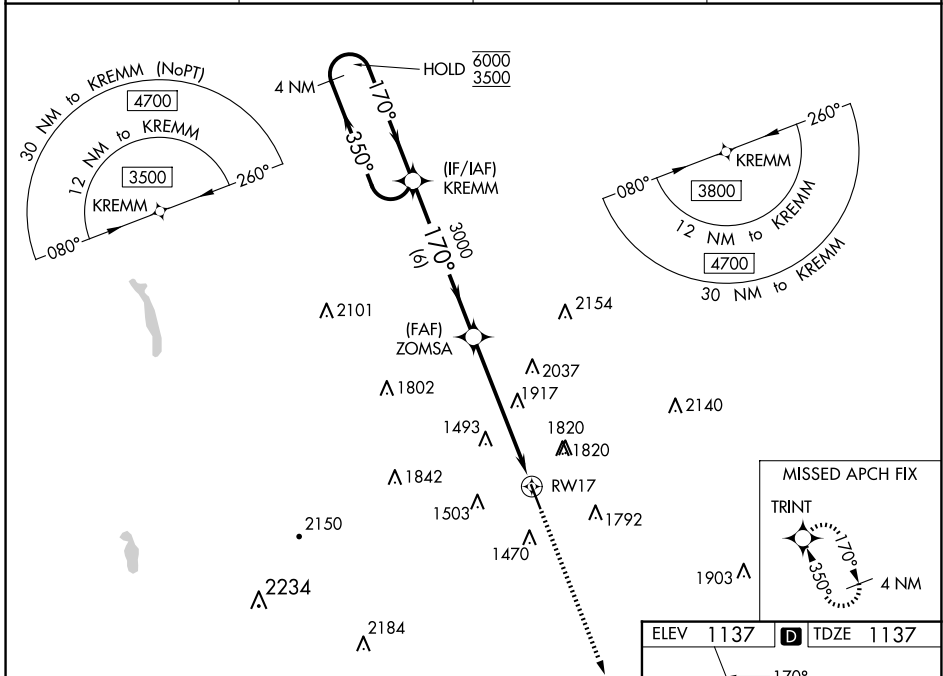
WAAS CH <b>65818</b> <b>W17A</b>	APP CRS <b>170°</b>	Rwy Idg <b>5014</b>
		TDZE <b>1137</b>
		Apt Elev <b>1137</b>

# RNAV (GPS) RWY 17

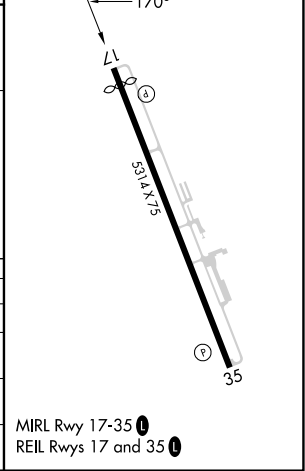
HAMILTON MUNI (VGC)

RNP APCH - GPS.	MISSED APPROACH: Climb to 3600 direct TRINT and hold.
<p><b>▼</b> Rwy 17 helicopter visibility reduction below 1 SM NA. For uncompensated Baro-VNAV systems, LNAV/VNAV NA below -17°C or above 54°C. Straight-In and Circling Rwy 17 NA at night.</p> <p><b>▲</b> NA</p>	

AWOS-3P <b>119.425</b>	SYRACUSE APP CON <b>126.125 269.125</b>	UNICOM <b>123.0 (CTAF)</b>	<b>122.7</b>
---------------------------	--	-------------------------------	--------------



ELEV <b>1137</b>	<b>D</b> TDZE <b>1137</b>
------------------	---------------------------



CATEGORY	A	B	C	D
LPV DA	1447-7/8 310 [400-7/8]			NA
LNAV/VNAV DA	2412-5 1275 (1300-5)			NA
LNAV MDA	2220-1¼ 1083 (1100-1¼)	2220-1½ 1083 (1100-1½)	2220-3 1083 (1100-3)	NA
<b>C</b> CIRCLING	2220-1¼ 1083 (1100-1¼)	2220-1½ 1083 (1100-1½)	2340-3 1203 (1300-3)	NA

NE-2, 15 MAY 2025 to 12 JUN 2025

NE-2, 15 MAY 2025 to 12 JUN 2025