

WAAS CH <b>53720</b> <b>W06A</b>	APP CRS <b>060°</b>	Rwy Idg <b>5008</b> TDZE <b>142</b> Apt Elev <b>144</b>
--	------------------------	---

# RNAV (GPS) RWY 6

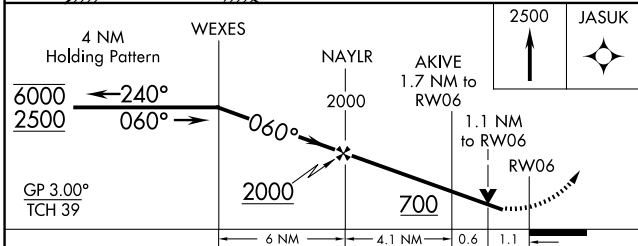
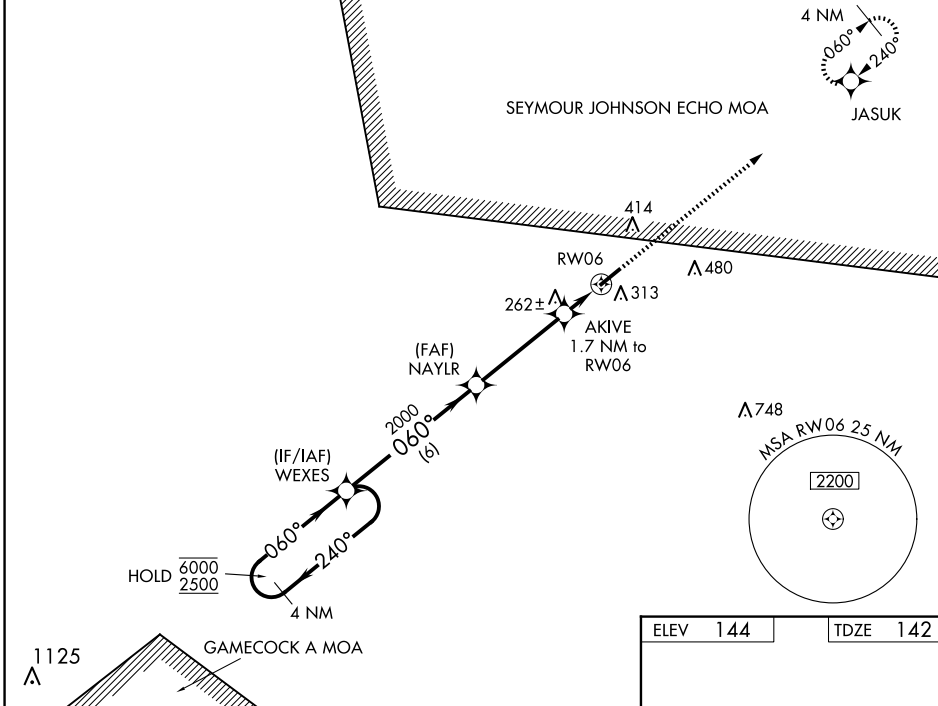
CLINTON-SAMPSON COUNTY (CTZ)

RNP APCH - GPS.

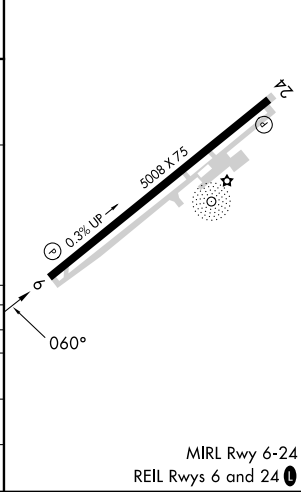
**⚠** Rwy 6 helicopter visibility reduction below 3/4 SM NA.  
For uncompensated Baro-VNAV systems, LNAV/VNAV NA below -15°C or above 54°C.

**MISSED APPROACH:**  
Climb to 2500 direct JASUK and hold.

AWOS-3 <b>119.125</b>	FAYETTEVILLE APP CON <b>133.0 290.25</b>	UNICOM <b>122.8 (CTAF) 0</b>
--------------------------	---	---------------------------------



ELEV <b>144</b>	TDZE <b>142</b>
-----------------	-----------------



CATEGORY	A	B	C	D
LPV DA		392-3/4	250 (300-3/4)	
LNAV/VNAV DA		545-1 1/8	403 (500-1 1/8)	
LNAV MDA		520-1	378 (400-1)	
CIRCLING	680-1 536 (600-1)	780-1 636 (700-1)	840-2 696 (700-2)	840-2 1/4 696 (700-2 1/4)

SE-2, 15 MAY 2025 to 12 JUN 2025

SE-2, 15 MAY 2025 to 12 JUN 2025