

| | | |
|--|------------------------|---|
| WAAS CH 56525 W14A | APP CRS 136° | Rwy ldg 5310 TDZE 4168 Apt Elev 4176 |
|--|------------------------|---|

RNAV (GPS) RWY 14

MONDELL FLD (ECS)

RNP APCH.

∇ When Newcastle altimeter setting not received, procedure NA.
⚠ For uncompensated Baro-VNAV systems, LNAV/VNAV NA below -23°C (-9°F) or above 53°C (128°F). Rwy 14 helicopter visibility reduction below 3/4 SM NA. Circling NA northeast of Rwy 14-32.

MISSED APPROACH: Climb to 9400 direct WAMAK and hold, continue climb-in-hold to 9400.

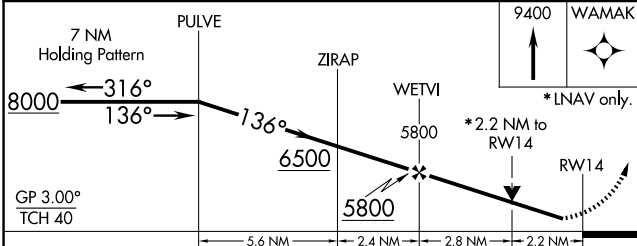
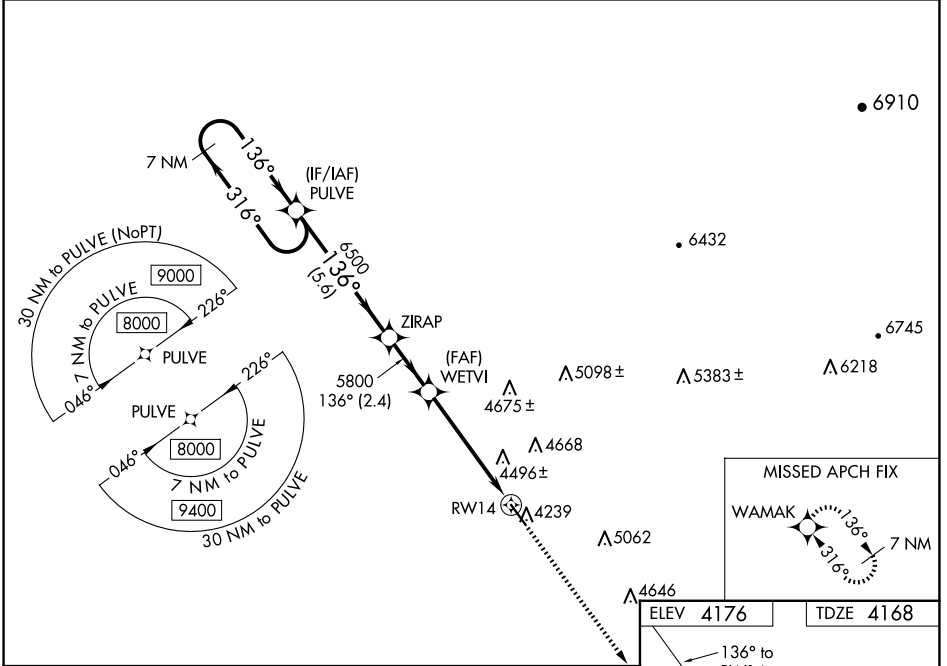
AWOS-3PT
118.0

DENVER CENTER
127.95 338.2

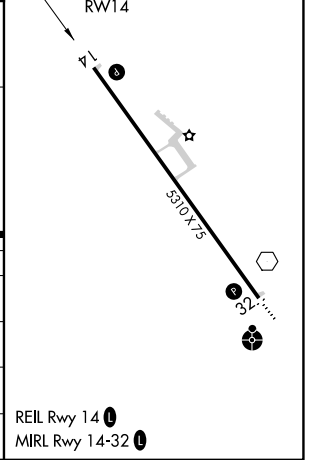
UNICOM
122.8 (CTAF) 0

NW-1, 15 MAY 2025 to 12 JUN 2025

NW-1, 15 MAY 2025 to 12 JUN 2025



| CATEGORY | A | B | C | D |
|-------------------|-----------------------|-------------------------|-------------------------|-------------------------|
| LPV DA | 4418-1 250 (300-1) | | | |
| LNAV/VNAV DA | 4846-2½ 678 (700-2½) | | | |
| LNAV MDA | 4920-1 752 (800-1) | 4920-1¼ 752 (800-1¼) | 4920-2 752 (800-2) | |
| C CIRCLING | 4920-1 744 (800-1) | 4920-1¼ 744 (800-1¼) | 4920-2¼ 744 (800-2¼) | 5000-2¾ 824 (900-2¾) |



REIL Rwy 14 0
MIRL Rwy 14-32 0