

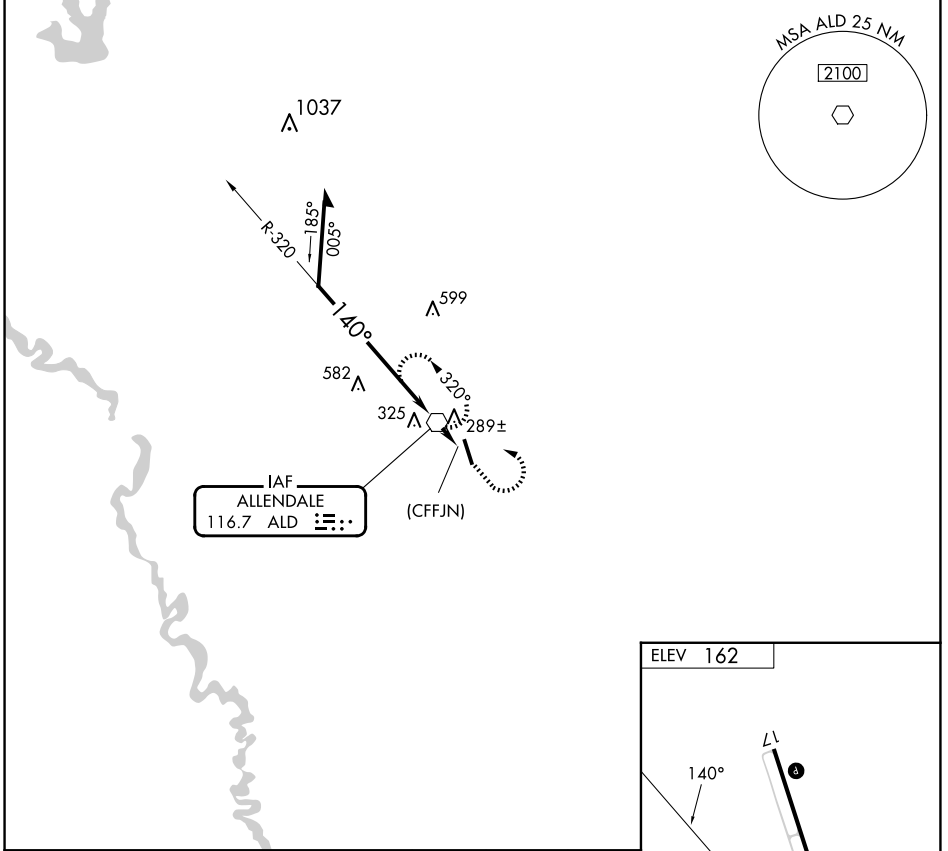
VOR ALD 116.7	APP CRS 140°	Rwy Idg TDZE Apt Elev	N/A N/A 162
-------------------------	------------------------	-----------------------------	--

VOR-A
ALLENDALE COUNTY (A.Q.X)

⚠ When local altimeter setting not received, use Augusta Rgnl at Bush Fld altimeter setting.

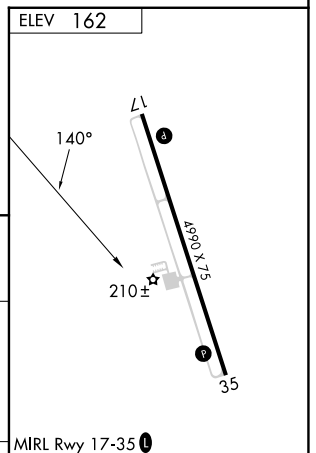
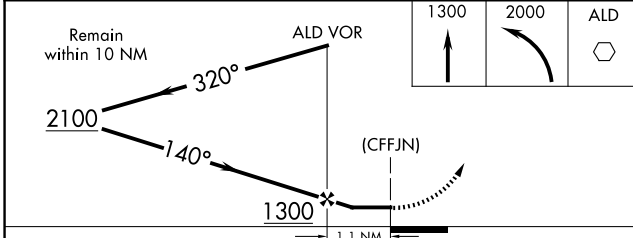
⚠ MISSED APPROACH: Climb to 1300, then climbing left turn to 2000 direct ALD VOR and hold.

AWOS-3PT 118.95	JACKSONVILLE CENTER 132.925 363.2	UNICOM 122.8 (CTAF) 0
---------------------------	---	---------------------------------



SE-2, 15 MAY 2025 to 12 JUN 2025

SE-2, 15 MAY 2025 to 12 JUN 2025



CATEGORY	A	B	C	D	ELEV 162	FAF to MAP 1.1 NM					
C CIRCLING	860-1	698 (700-1)	NA	NA		Knots	60	90	120	150	180
						Min:Sec	1:06	0:44	0:33	0:26	0:22