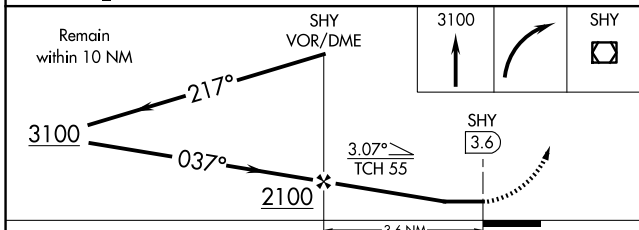
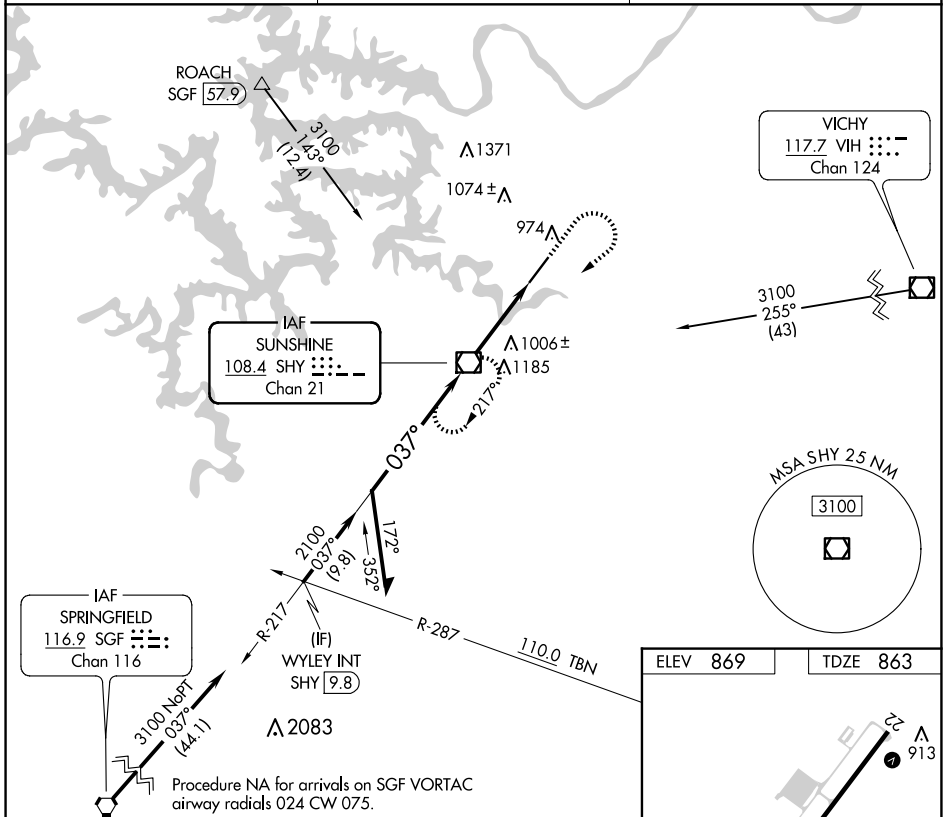


VOR/DME SHY 108.4 Chan 21	APP CRS 037°	Rwy Idg 6497 TDZE 863 Apt Elev 869
--	------------------------	---

VOR RWY 4

LEE C FINE MEML (AIZ)

<p>▼ Straight-in minimums NA at night. Helicopter visibility reduction below 1 SM NA. ▲ When local altimeter setting not received, use Camden ton altimeter setting and increase all MDAs 60 feet and S-4 Cat C and Circling Cat C visibility ¼ SM.</p>	<p>MISSED APPROACH: Climb to 3100 then right turn direct SHY VOR/DME and hold.</p>	
<p>AWOS-3PT 135.325</p>	<p>MIZZU APP CON 124.1 353.925</p>	<p>UNICOM 122.8 (CTAF) 0</p>



ELEV 869	TDZE 863												
<p>MIRL Rwy 4-22</p> <p>FAF to MAP 3.6 NM</p> <table border="1"> <tr> <td>Knots</td> <td>60</td> <td>90</td> <td>120</td> <td>150</td> <td>180</td> </tr> <tr> <td>Min:Sec</td> <td>3:36</td> <td>2:24</td> <td>1:48</td> <td>1:26</td> <td>1:12</td> </tr> </table>		Knots	60	90	120	150	180	Min:Sec	3:36	2:24	1:48	1:26	1:12
Knots	60	90	120	150	180								
Min:Sec	3:36	2:24	1:48	1:26	1:12								

CATEGORY	A	B	C	D
S-4	1260-1	397 (400-1)	1260-1½ 397 (400-1½)	NA
CIRCLING	1320-1 451 (500-1)	1380-1 511 (600-1)	1440-1½ 571 (600-1½)	NA

NC-3, 15 MAY 2025 to 12 JUN 2025

NC-3, 15 MAY 2025 to 12 JUN 2025