

| | | | |
|-------------|---------|----------|------|
| VOR/DME SCB | APP CRS | Rwy Idg | 4650 |
| 111.0 | 147° | TDZE | 1204 |
| Chan 47 | | Apt Elev | 1204 |

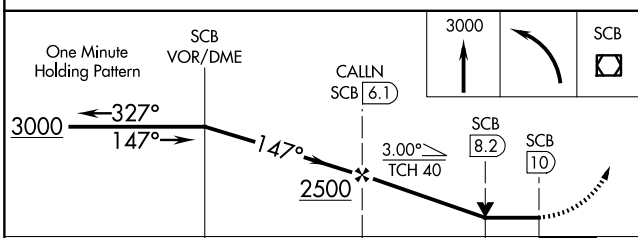
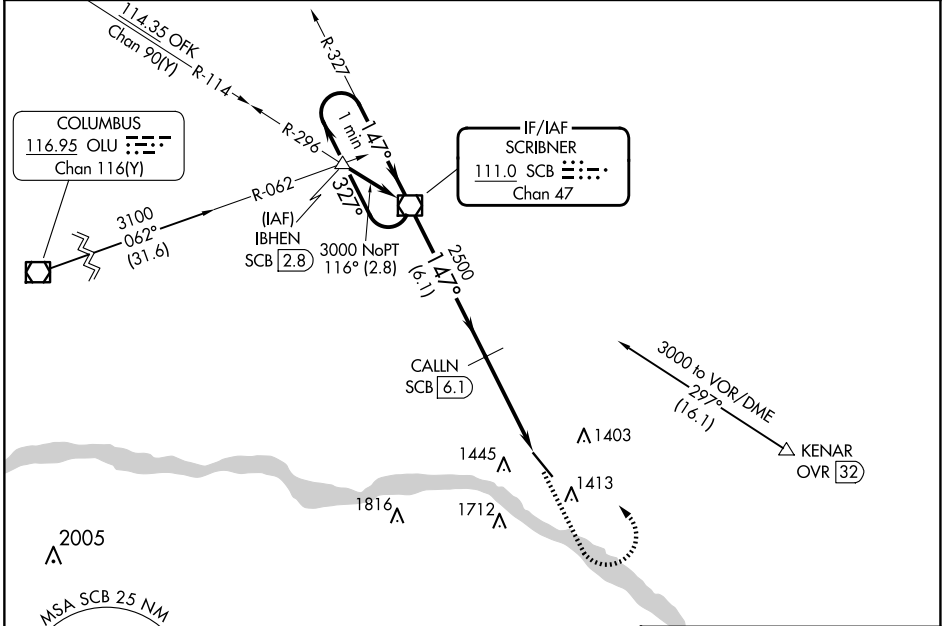
VOR RWY 14

FREMONT MUNI (F/E/T)

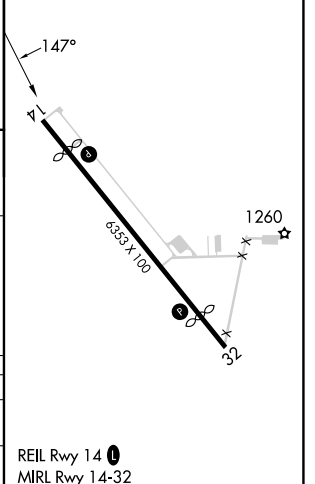
V VDP NA with Blair altimeter setting. Rwy 14 helicopter visibility reduction below 1 SM NA. When local altimeter setting not received, use Blair altimeter setting and increase all MDA 60 feet; increase S-14 Cat C visibility 1/8 mile. DME required.

NA MISSED APPROACH: Climb to 3000 then left turn direct SCB VOR/DME and hold.

| | | |
|--------------------------|--|---------------------------------|
| AWOS-3 121.275 | OMAHA APP CON 135.875 354.05 | UNICOM 122.8 (CTAF) 0 |
|--------------------------|--|---------------------------------|



| | |
|-----------|-----------|
| ELEV 1204 | TDZE 1204 |
|-----------|-----------|



| CATEGORY | A | B | C | D |
|-------------------|--------|-------------|-------------------------------|----|
| S-14 | 1820-1 | 616 (700-1) | 1820-1 3/4 616 (700-1 3/4) | NA |
| C CIRCLING | 1820-1 | 616 (700-1) | 2020-2 1/2 816 (900-2 1/2) | NA |

NC-2, 15 MAY 2025 to 12 JUN 2025

NC-2, 15 MAY 2025 to 12 JUN 2025