



LOC I-MKT **108.7** APP CRS **335°** Rwy Idg **6600**  
 TDZE **1021** Apt Elev **1021**

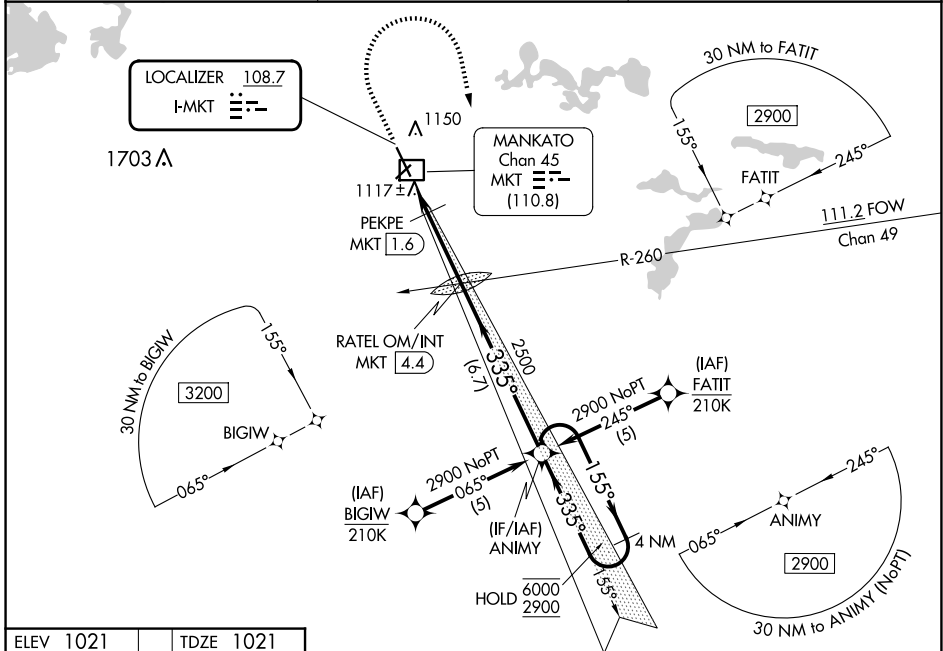
# ILS Y or LOC Y RWY 33

MANKATO RGNL (MKT)

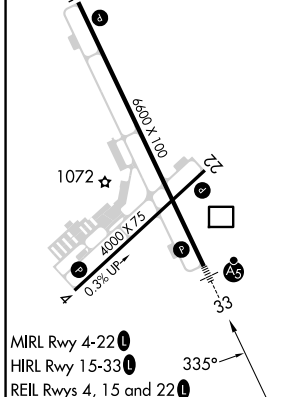
RNP APCH - GPs. MALSR  MISSED APPROACH: Climb to 1500 then climbing right turn to 2900 direct ANIMY and hold.

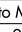
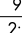

 \*DME from MKT DME. DME use requires simultaneous reception of I-MKT and MKT DME. For inop ALS, increase PEKPE fix minimums S-LOC 33 Cats C/D visibility to 1 SM.

AWOS-3PT **118.175** MINNEAPOLIS CENTER **135.0 306.9** UNICOM **122.725 (CTAF)**

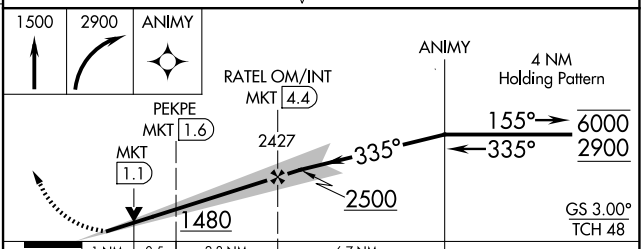


ELEV 1021 TDZE 1021



MIRL Rwy 4-22   
 HIRL Rwy 15-33   
 REIL Rwys 4, 15 and 22 

FAF to MAP 4.3 NM					
Knots	60	90	120	150	180
Min:Sec	4:18	2:52	2:09	1:43	1:26



CATEGORY	A	B	C	D
S-ILS 33	1221-1/2 200 (200-1/2)			
S-LOC 33	1480-1/2	459 (500-1/2)	1480-7/8	459 (500-7/8)
CIRCLING	1480-1	459 (500-1)	1600-1/2	1600-2
			579 (600-1/2)	579 (600-2)
PEKPE FIX MINIMUMS*				
S-LOC 33	1380-1/2	359 (400-1/2)	1380-5/8	359 (400-5/8)
CIRCLING	1460-1	1480-1	1600-1/2	1600-2
	439 (500-1)	459 (500-1)	579 (600-1/2)	579 (600-2)

NC-1, 15 MAY 2025 to 12 JUN 2025

NC-1, 15 MAY 2025 to 12 JUN 2025