

FORT DRUM, NEW YORK

RNAV (GPS) RWY 15

APCH CRS 147°	Rwy Idg TDZE Arprt Elev	5002 687 690
------------------	-------------------------------	--------------------

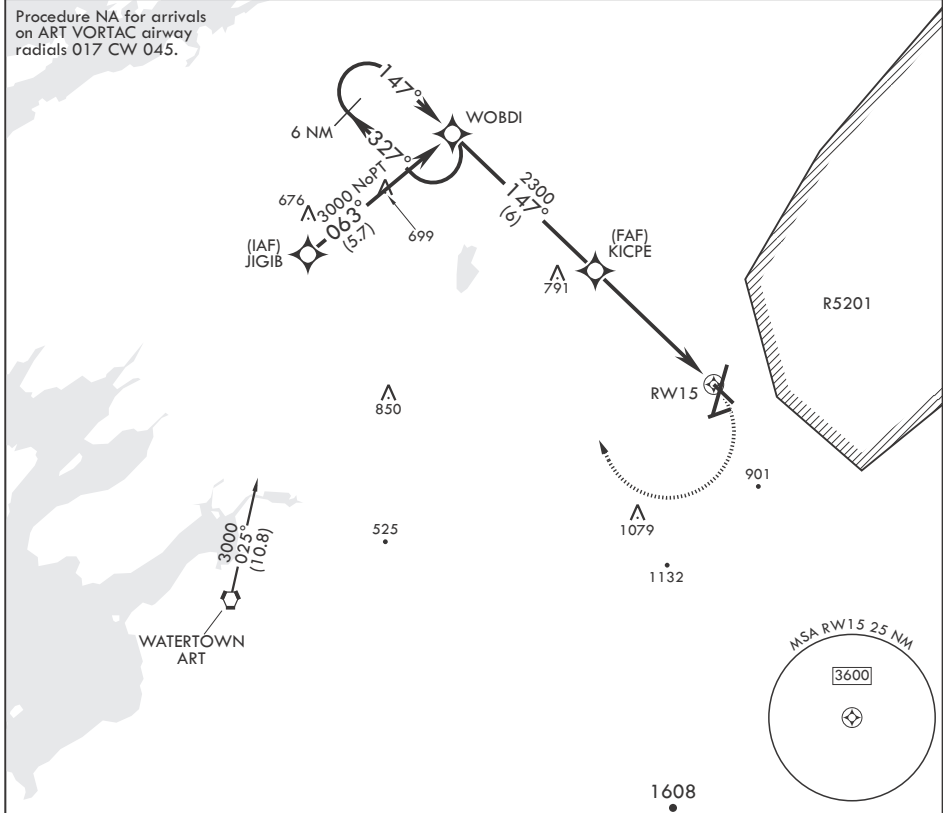
-(USA)

WHEELER SACK AAF (KGTB)

RNP APCH - GPS	MALS R	MISSED APPROACH: Climbing right turn to 3000 direct WOBDI and hold.
* When ALS inop, increase CAT AB vis to 1 mile; CAT CD vis to 1 3/8 miles. ** Circling NA E of Rwy 21 and 33. Circling NA for CAT BCD to Rwy 8.		

ATIS 119.525	APP CON/DEP CON 124.875 307.125	TOWER 118.75 290.25	GND CON 123.65 229.8	CLNC DEL 123.65	ASR/PAR
-----------------	------------------------------------	------------------------	-------------------------	--------------------	---------

Procedure NA for arrivals on ART VORTAC airway radials 017 CW 045.



6 NM Holding Pattern	3000	WOBDI	ELEV 690	TDZE 687
3000 ← 327°	→ 147°	→ 147°	Rwy 3 Idg 8637'	
3.00' ≥ TCH 40		KICPE	147°	
		2300	10000' x 130	
		1.4 NM to RWY 15	0.59 UP 3002 x 144	
		5 NM	900 BCN 876	
			4501 x 150	
CATEGORY	A	B	C	D
LNAV MDA*	1200-3/4	513 (600-3/4)	1200-1	513 (600-1)
CIRCLING**	1200-1 510 (600-1)	1240-1 550 (600-1)	1280-1 1/2 590 (600-1 1/2)	1460-2 1/2 770 (800-2 1/2)

FORT DRUM, NEW YORK
Amdt 2 10AUG23

44°03'N - 75°43'W

WHEELER SACK AAF (KGTB)

RNAV (GPS) RWY 15

NE-2, 15 MAY 2025 to 12 JUN 2025

NE-2, 15 MAY 2025 to 12 JUN 2025

HIRL Rwys 3-21, 15-33
MIRL Rwy 8-26
RAIL Rwy 15