

FORT DRUM, NEW YORK

ILS or LOC RWY 21

LOC/DME I-GTB 108.5 Chan 22	APCH CRS 209°	Rwy ldg 10,000 TDZE 677 Arprt Elev 690
---	-------------------------	---

[USA]

WHEELER-SACK AAF (KGTB)

DME or RADAR required

▼ * When ALS inop, increase vis to ¾ mile.
** When ALS inop, increase CAT ABC vis to 1 mile, CAT DE vis to 1 ¼ miles.

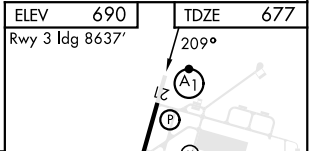
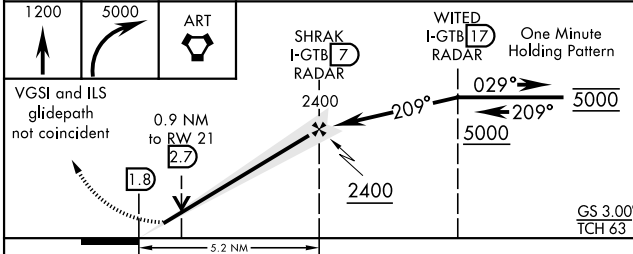
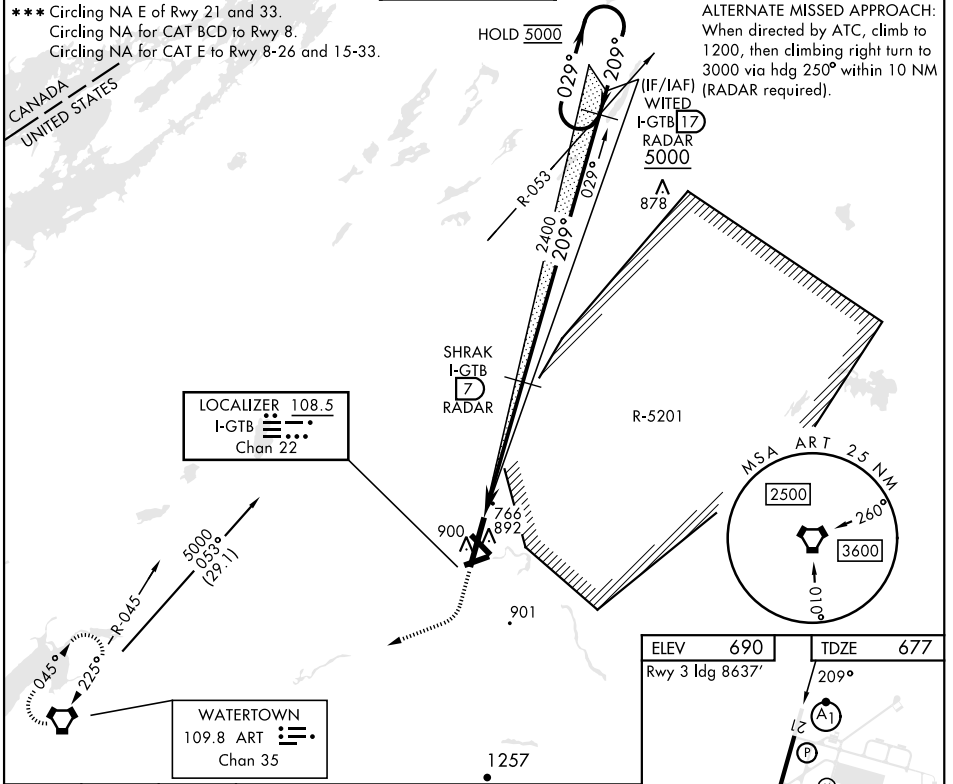


MISSED APPROACH: Climb to 1200, then climbing right turn to 5000 direct ART VORTAC and hold. Continue climb-in-hold to 5000.

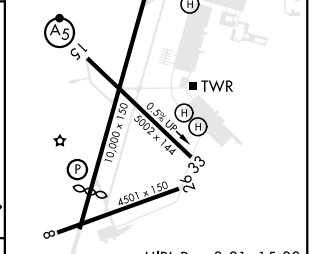
ATIS 119.525	APP CON 124.875 307.125	TOWER 118.75 290.25	GND CON 123.65 229.8	CLNC DEL 123.65	ASR/PAR
------------------------	-----------------------------------	-------------------------------	--------------------------------	---------------------------	---------

*** Circling NA E of Rwy 21 and 33.
Circling NA for CAT BCD to Rwy 8.
Circling NA for CAT E to Rwy 8-26 and 15-33.

ALTERNATE MISSED APPROACH: When directed by ATC, climb to 1200, then climbing right turn to 3000 via hdg 250° within 10 NM (RADAR required).



CATEGORY	A	B	C	D	E
S-ILS 21 *	877-½		200	(200-½)	
S-LOC 21 **	1040-½	363 (400-½)	1040-¾	363	(400-¾)
CIRCLING ***	1200-1 510 (600-1)	1220-1½	530 (600-1½)	1380-2¼ 690 (700-2¼)	1640-3 950 (1000-3)



FAF to MAP 5.2 NM					
Knots	120	140	160	180	200
Min:Sec	2:36	2:14	1:57	1:44	1:34

FORT DRUM, NEW YORK
Amdt 3 20APR23

44° 03'N-75° 43'W

WHEELER-SACK AAF (KGTB)

ILS or LOC RWY 21

NE-2, 15 MAY 2025 to 12 JUN 2025

NE-2, 15 MAY 2025 to 12 JUN 2025