

HI-ILS or LOC RWY 21

LOC/DME I-GTB 108.5 Chan 22	APCH CRS 209°	Rwy Idg 10,000 TDZE 677 Arprt Elev 690	[USA]	WHEELER-SACK AAF (KGTB)
---	-------------------------	---	-------	-------------------------

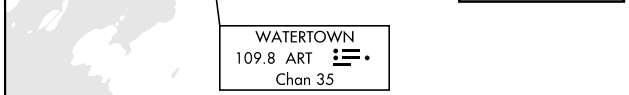
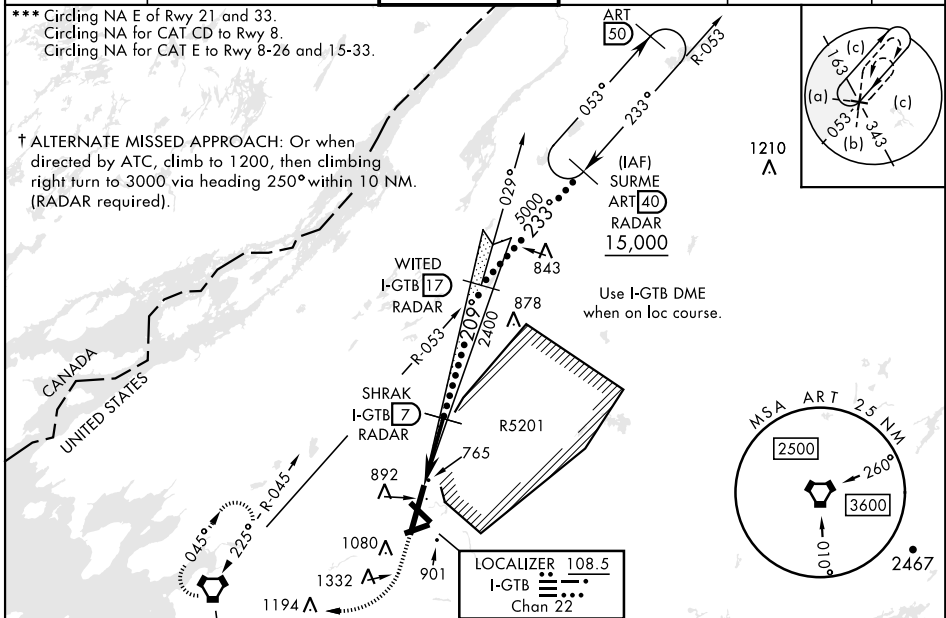
DME or RADAR required.

▽ * When ALS inop, increase vis to ¾ mile.
 ** When ALS inop, increase CAT C vis to 1 mile, CAT DE vis to 1¼ miles.

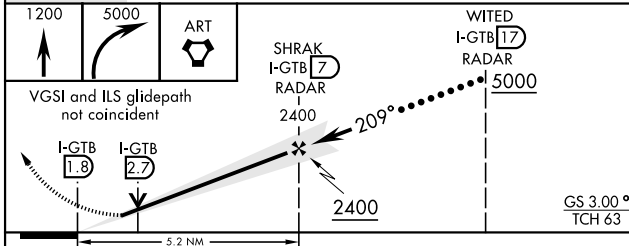
ALSF-1 ⊙ (A1)

† MISSED APPROACH: Climb to 1200, then climbing right turn to 5000 direct ART VORTAC and hold. Continue climb in hold to 5000.

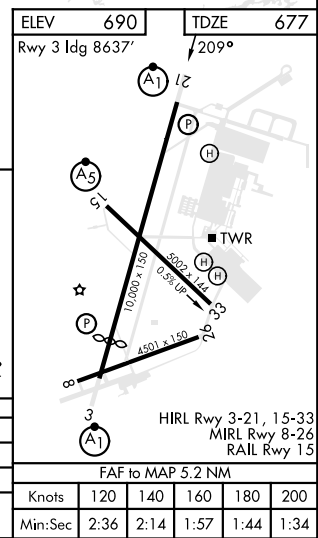
ATIS 119.525	APP CON 124.875 307.125	TOWER 118.75 290.25	GND CON 123.65 229.8	CLNC DEL 123.65	ASR/PAR
------------------------	-----------------------------------	-------------------------------	--------------------------------	---------------------------	---------



EMERG SAFE ALT 100 NM 7600



CATEGORY	C	D	E
S-ILS 21*	877-½	200	(200-½)
S-LOC 21**	1040-¾	363	(400-¾)
CIRCLING ***	1220-1½	1380-2¼	1640-3
	530 (600-1½)	690 (700-2¼)	950 (1000-3)



HI-ILS or LOC RWY 21

NE-2, 15 MAY 2025 to 12 JUN 2025

NE-2, 15 MAY 2025 to 12 JUN 2025