

VORTAC MCB 116.7 Chan 114	APP CRS 233°	Rwy Idg TDZE Apt Elev N/A N/A 413
-----------------------------------------------	------------------------	-----------------------------------------------------------------------

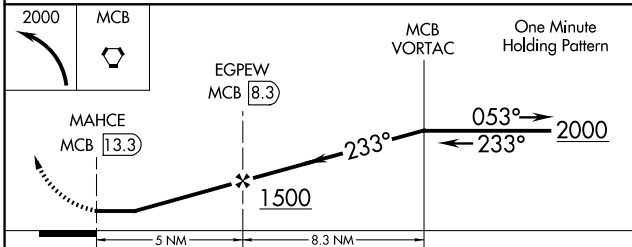
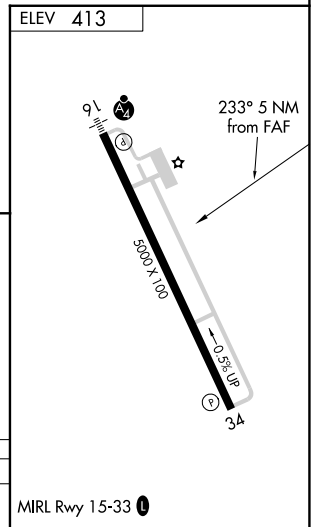
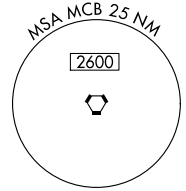
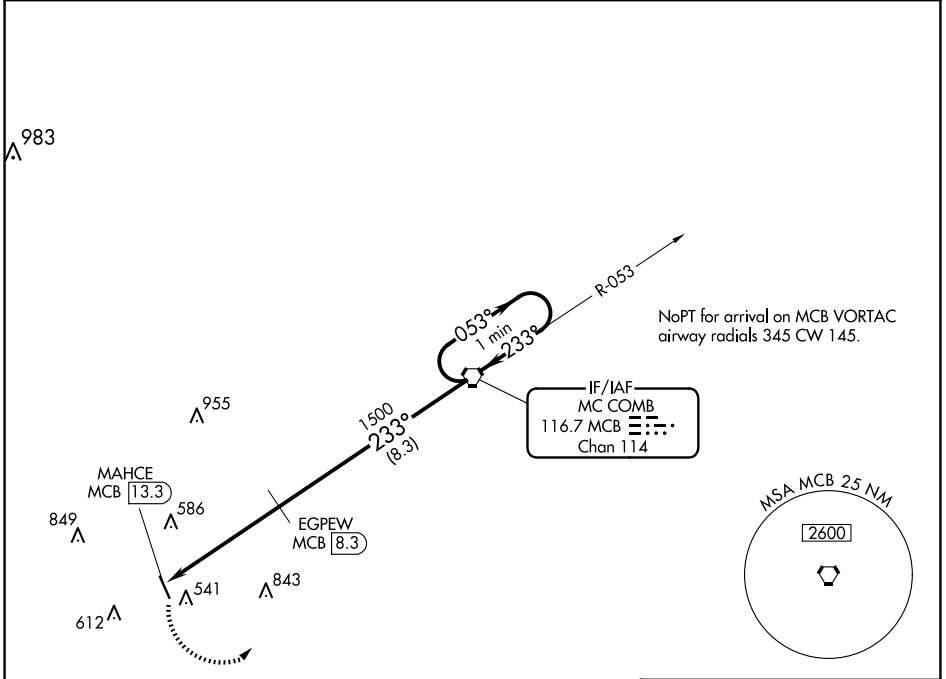
VOR/DME-A

MC COMB/PIKE COUNTY/JOHN E LEWIS FLD (MCB)

⚠ When local altimeter setting not received, use Natchez altimeter setting and increase MDA 140 feet and Cat C and D visibility 1/4 mile.

MISSED APPROACH: Climbing left turn to 2000 direct MCB VORTAC and hold

ASOS 119.025	HOUSTON CENTER 126.8 327.8	UNICOM 123.05 (CTAF) 0
------------------------	--------------------------------------	----------------------------------



CATEGORY	A	B	C	D
C CIRCLING	880-1	467 (500-1)	940-1½ 527 (600-1½)	1160-2½ 747 (800-2½)

MIRL Rwy 15-33 0

SC-4, 15 MAY 2025 to 12 JUN 2025

SC-4, 15 MAY 2025 to 12 JUN 2025