

WAAS CH 72824 W16A	APP CRS 157°	Rwy Idg TDZE Apt Elev	5000 413 413
----------------------------------------	------------------------	-----------------------------	-----------------------------------------

RNAV (GPS) RWY 16

MC COMB/PIKE COUNTY/JOHN E LEWIS FLD (MCB)

RNP APCH.

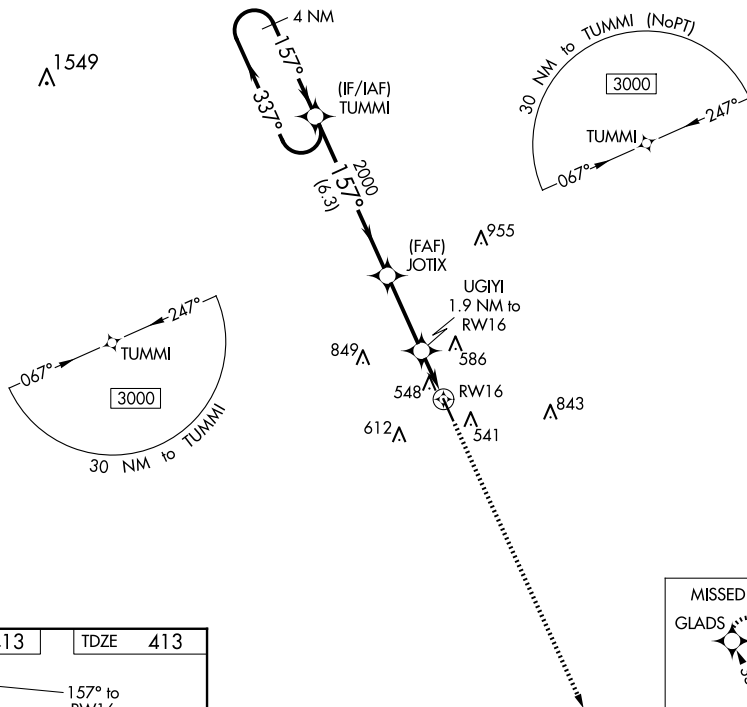
⚠ For uncompensated Baro-VNAV systems, LNAV/VNAV NA below -4°C (25°F) or above 54°C (130°F). Inop table does not apply to LPV all Cats. For inop ALS, increase LNAV/VNAV all Cats visibility to 7/8 SM.

MALSF

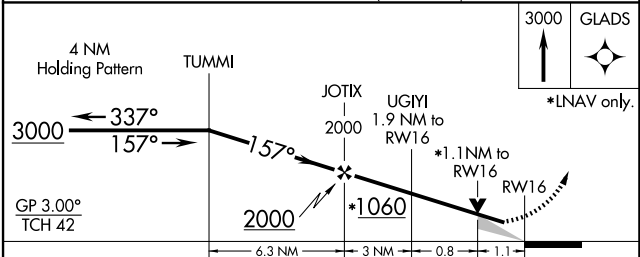
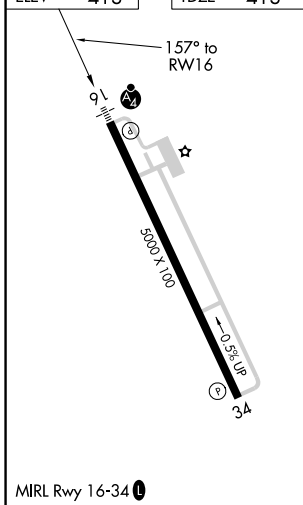


MISSED APPROACH:
Climb to 3000 direct
GLADS and hold.

ASOS 119.025	HOUSTON CENTER 126.8 327.8	UNICOM 123.05 (CTAF) 0
------------------------	--------------------------------------	----------------------------------



ELEV	413	TDZE	413
------	------------	------	------------



CATEGORY	A	B	C	D
LPV DA		615-3/4	202 (300-3/4)	
LNAV/VNAV DA		709-3/4	296 (300-3/4)	
LNAV MDA	800-3/4	387 (400-3/4)	800-7/8	387 (400-7/8)
C CIRCLING	880-1	467 (500-1)	940-1 1/2 527 (600-1 1/2)	1160-2 1/2 747 (800-2 1/2)

RNAV (GPS) RWY 16

SC-4, 15 MAY 2025 to 12 JUN 2025

SC-4, 15 MAY 2025 to 12 JUN 2025