

VOR/DME AIR 117.1	APP CRS 229°	Rwy ldg 3805
Chan 118	TDZE 1197	Apt Elev 1197

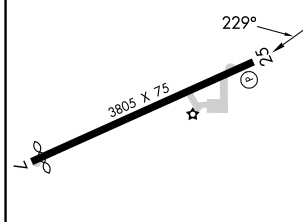
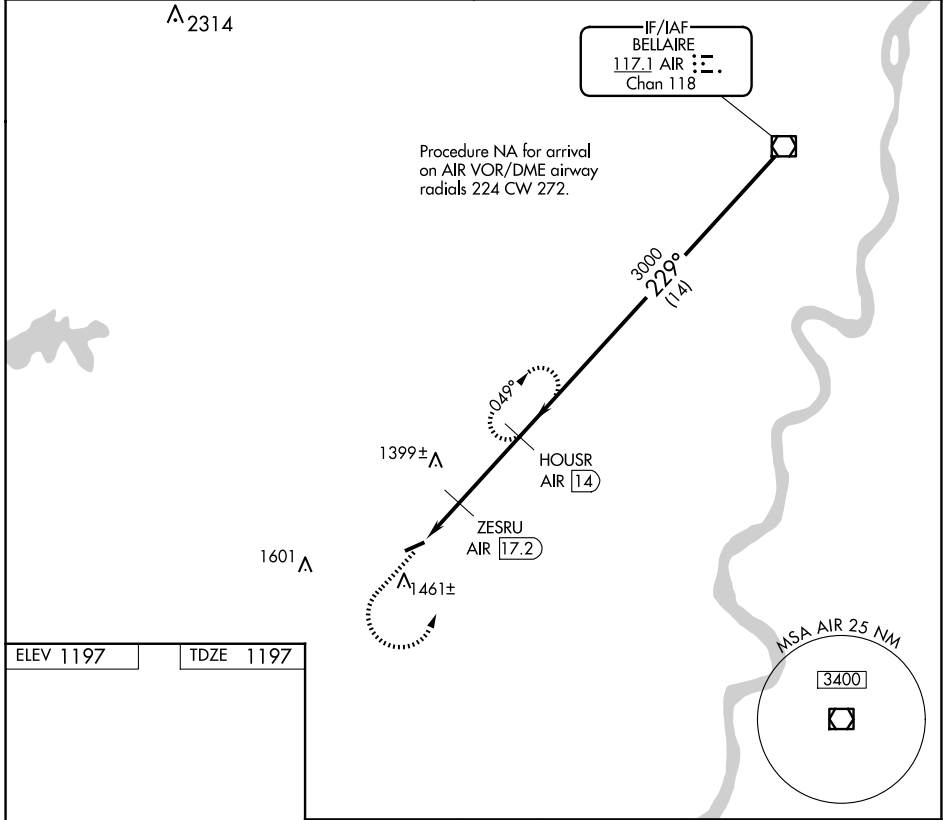
VOR/DME RWY 25

MONROE COUNTY (4G5)

▼ Use Wheeling Ohio Co, WV alimeter setting; when not received use Parkersburg, WV alimeter setting and increase all MDA 60 feet; increase S-25 Cat C visibility 1/8 mile and Circling Cat C visibility 1/4 mile. Procedure NA at night.
▲ NA Rwy 25 helicopter visibility reduction below 1 SM NA.

MISSED APPROACH: Climb to 3000 then left turn on AIR VOR/DME R-229 to HOUSR/AIR 14 DME and hold.

CLEVELAND CENTER 126.95 239.3	UNICOM 122.8 (CTAF) 0
---	---------------------------------



ELEV 1197	TDZE 1197	3000	HOUSR AIR 14	VGSI and descent angles not coincident (VGSI Angle 3.00/TCH 40).
		AIR R-229	HOUSR AIR 14	HOUSR AIR 14
		ZESRU AIR 17.2	AIR VOR/DME	AIR VOR/DME
		AIR 19.1	3000	3000
		TCH 40	1920	
		1.9 NM	3.2 NM	1.4 NM
CATEGORY	A	B	C	D
S-25	1740-1 543 (600-1)		1740-1 5/8 543 (600-1 5/8)	NA
☐ CIRCLING	1860-1 663 (700-1)		1860-1 3/4 663 (700-1 3/4)	NA

EC-2, 15 MAY 2025 to 12 JUN 2025

EC-2, 15 MAY 2025 to 12 JUN 2025