

WAAS CH 65833 W25A	APP CRS 254°	Rwy Idg TDZE Apt Elev	3805 1197 1197
--	------------------------	-----------------------------	---

RNAV (GPS) RWY 25

MONROE COUNTY (4G5)

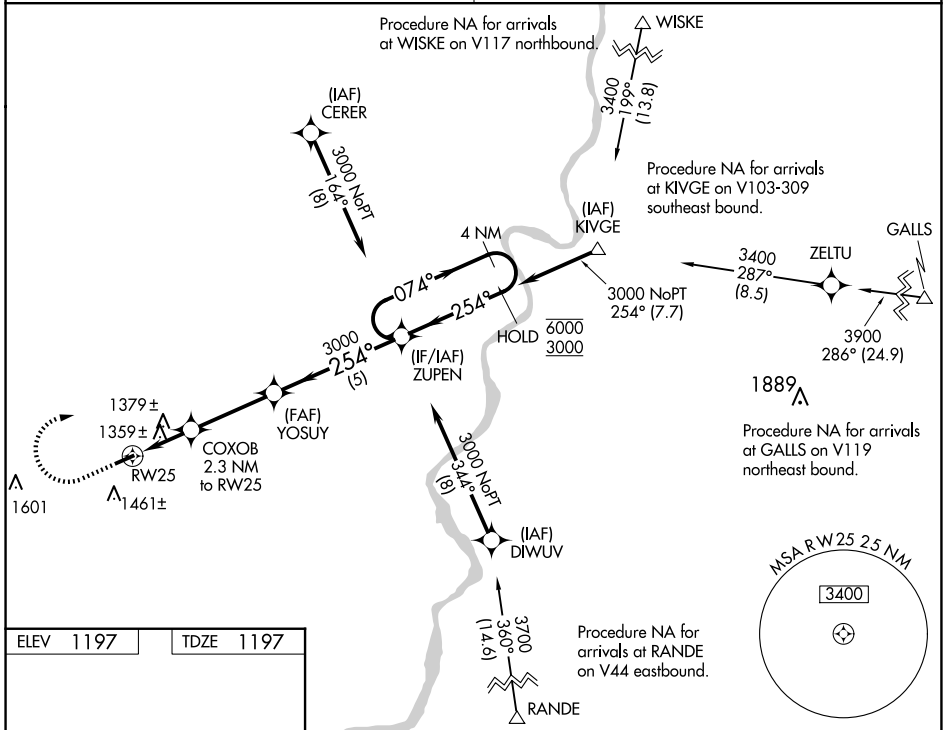
RNP APCH.

NA Rwy 25 helicopter visibility reduction below 1 SM NA. Use Wheeling Ohio Co, WV altimeter setting; when not received use Parkersburg, WV altimeter setting and increase all MDA 60 feet; increase LP Cat C, LNAV Cat C and Circling Cat C visibility $\frac{1}{4}$ SM. Procedure NA at night.

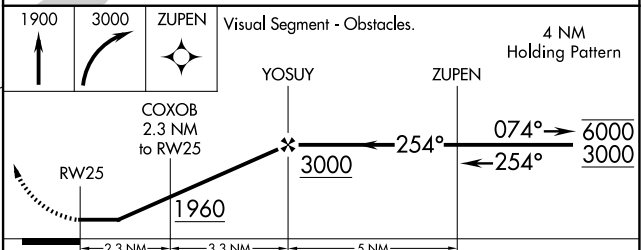
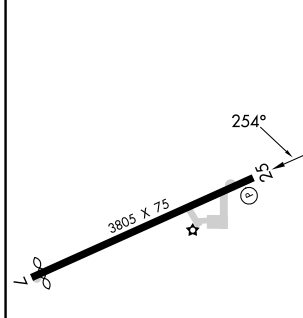
MISSED APPROACH: Climb to 1900 then climbing right turn to 3000 direct ZUPEN and hold.

CLEVELAND CENTER **126.95 239.3**

UNICOM **122.8 (CTAF)**



ELEV 1197	TDZE 1197
-----------	-----------



CATEGORY	A	B	C	D
LP MDA	1700-1	503 (600-1)	1700-1 $\frac{3}{8}$ 503 (600-1 $\frac{3}{8}$)	NA
LNAV MDA	1720-1	523 (600-1)	1720-1 $\frac{1}{2}$ 523 (600-1 $\frac{1}{2}$)	NA
C CIRCLING	1860-1	663 (700-1)	1860-1 $\frac{3}{4}$ 663 (700-1 $\frac{3}{4}$)	NA

REIL Rwy 25 **1**
MIRL Rwy 7-25 **1**

EC-2, 15 MAY 2025 to 12 JUN 2025

EC-2, 15 MAY 2025 to 12 JUN 2025