

APP CRS	Rwy ldg	<b>7098</b>
<b>120°</b>	TDZE	<b>4123</b>
	Apt Elev	<b>4124</b>

# RNAV (GPS) Z RWY 12

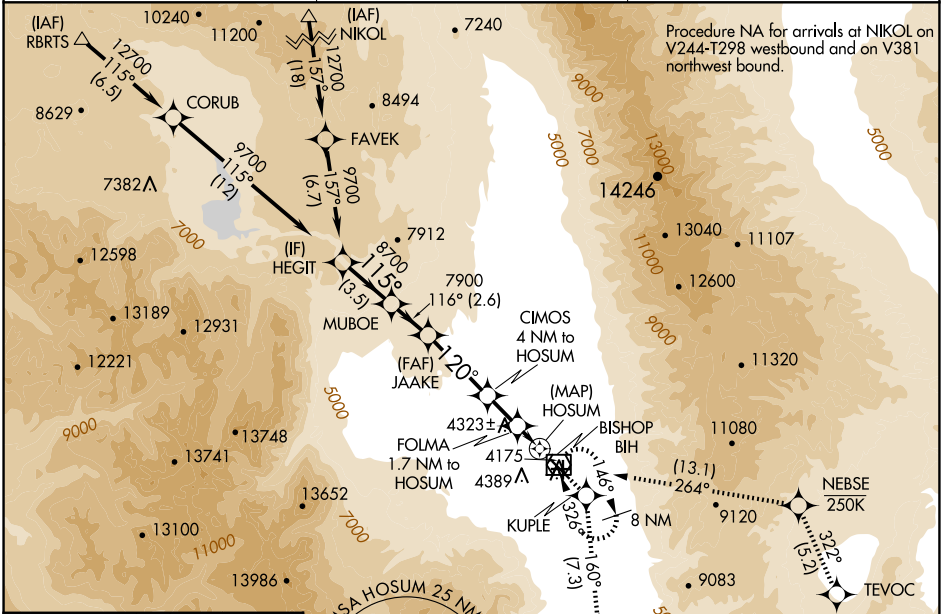
BISHOP (BIH)

RNP APCH-GPS.

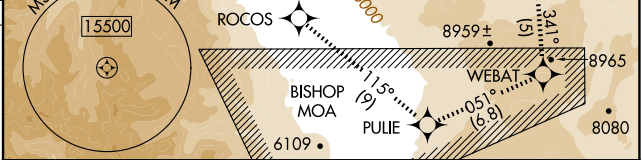
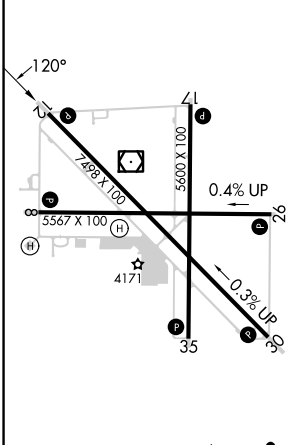
▼ Rwy 12, helicopter visibility reduction below 3/4 SM NA.  
 ▲ Missed approach requires minimum climb of 325 feet per NM to 11000; if unable, see RNAV (GPS) Y RWY 12.

MISSED APPROACH: (Do not exceed 250 KIAS until NEBSE)  
 Climb to 13000 direct KUPLE and on track 160° to ROCOS and on track 115° to PULIE and on track 051° to WEBAT and on track 341° to TEVOC and on track 322° to NEBSE and on track 264° to BIH VOR/DME and hold.

ASOS <b>119.025</b>	OAKLAND CENTER <b>125.75 284.65</b>	UNICOM <b>123.0 (CTAF)</b>
------------------------	--	-------------------------------



ELEV 4124	D	TDZE 4123
-----------	---	-----------



HEGIT	MUBOE	JAAKE	KUPLE	ROCOS	
9700	8700	7900	6200	5200	
CATEGORY		A	B	C	D
LNAV MDA		4580-1 1/4 457 (500-1 1/4)		NA	
CIRCLING		6420-1 1/4 2296 (2300-1 1/4)	6420-1 1/2 2296 (2300-1 1/2)	6420-3 2296 (2300-3)	NA

SW-2, 15 MAY 2025 to 12 JUN 2025

SW-2, 15 MAY 2025 to 12 JUN 2025