


(OOM5.OOM) 23334

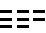
HOOSIER FIVE DEPARTURE


AL-5733 (FAA)

EAGLE CREEK AIRPARK (EYE)
INDIANAPOLIS, INDIANA

ASOS
121.575
CLNC DEL
128.6
INDIANAPOLIS DEP CON
119.05 317.8

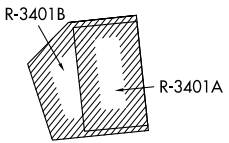
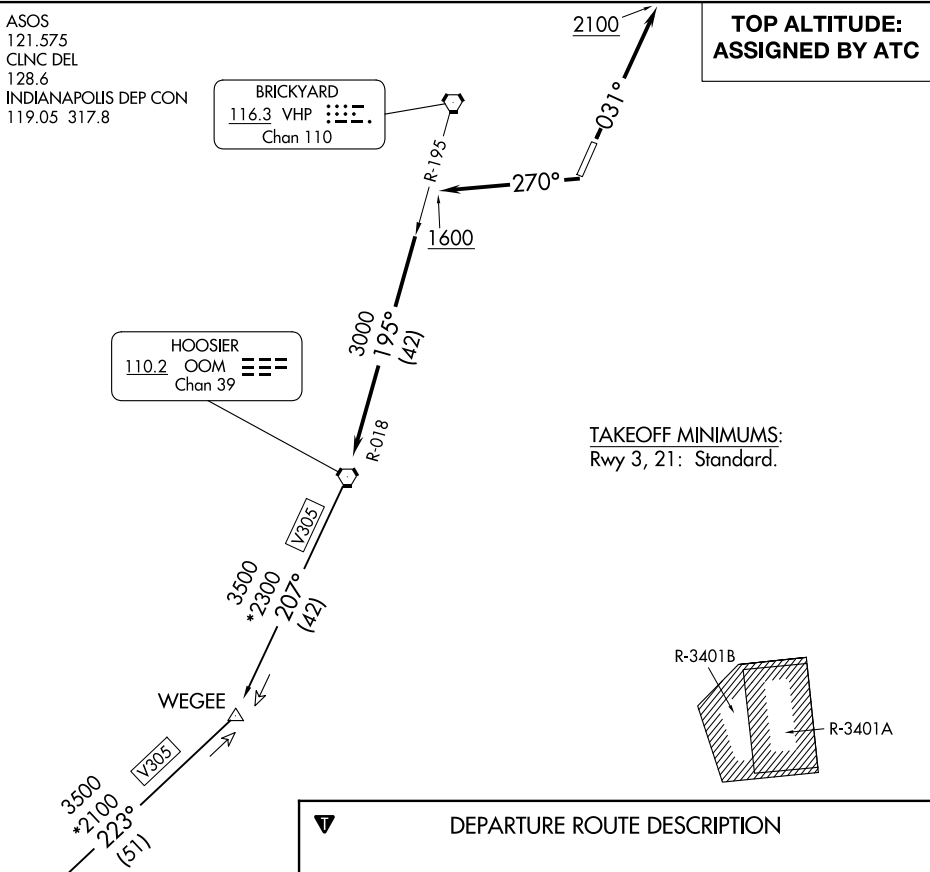
BRICKYARD
116.3 VHP 
Chan 110

HOOSIER
110.2 OOM 
Chan 39

WEGEE
113.3 PXV 
Chan 80

**TOP ALTITUDE:
ASSIGNED BY ATC**

TAKEOFF MINIMUMS:
Rwy 3, 21: Standard.



DEPARTURE ROUTE DESCRIPTION

TAKEOFF RWY 3: Climb heading 031° to 2100, then on assigned heading to assigned altitude. Thence....

TAKEOFF RWY 21: Climb heading 270° to 1600, then on assigned heading to assigned altitude. Thence....

...expect RADAR vectors to join VHP R-195 to OOM VORTAC then via transition or assigned route. Expect clearance to requested altitude ten minutes after departure.

POCKET CITY TRANSITION (OOM5.PXV): From over OOM VORTAC via OOM R-207 to WEGEE, then via PXV R-043 to PXV VORTAC.

- NOTE: RADAR required.
- NOTE: Select appropriate localizer/DME frequency/channel prior to departure.
- NOTE: Turbojets accelerate to 250K until reaching 10000, if unable advise ATC.
- NOTE: Assigned to aircraft with a requested altitude of 11000 or above.

NOTE: Chart not to scale.

EC-2, 15 MAY 2025 to 12 JUN 2025

EC-2, 15 MAY 2025 to 12 JUN 2025

HOOSIER FIVE DEPARTURE
(OOM5.OOM) 01FEB18

INDIANAPOLIS, INDIANA
EAGLE CREEK AIRPARK (EYE)