

(KWEEN5.KWEEN) 24081

AL-5726 (FAA)

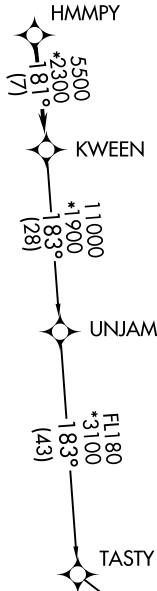
CHARLOTTE/MONROE EXEC (EQY)  
MONROE, NORTH CAROLINA

# KWEEN FIVE DEPARTURE (RNAV)

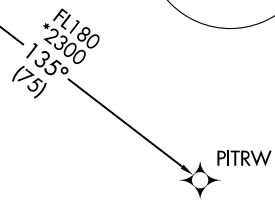
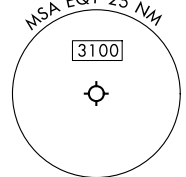
CHARLOTTE DEP CON  
120.05 307.8  
ASOS  
135.775  
CLNC DEL  
132.55  
UNICOM  
122.7

RNAV 1 - DME/DME/IRU or GPS.  
RADAR required.

**TOP ALTITUDE:  
3000**



TAKEOFF MINIMUMS  
Rwys 5, 23: Standard.



- NOTE: For turbo jets only.
- NOTE: Transponder code will be issued via PDC or Charlotte CLNC DEL.
- NOTE: If unable to accept climb rates, advise ATC on initial contact.
- NOTE: Upon reaching 10000 MSL, accelerate to and maintain 280K, if unable advise ATC.

NOTE: Chart not to scale.

## DEPARTURE ROUTE DESCRIPTION

Climb on heading assigned by ATC, on RADAR vectors to HMMPY, then on track 181° to KWEEN, then on assigned transition, maintain 3000, expect filed altitude within 10 minutes after departure.

PITRW TRANSITION (KWEEN5.PITRW)  
UNJAM TRANSITION (KWEEN5.UNJAM)

KWEEN FIVE DEPARTURE (RNAV)  
(KWEEN5.KWEEN) 21MAR24

MONROE, NORTH CAROLINA  
CHARLOTTE/MONROE EXEC (EQY)

SE-2, 15 MAY 2025 to 12 JUN 2025

SE-2, 15 MAY 2025 to 12 JUN 2025