

WAAS CH 70604 W07A	APP CRS 069°	Rwy Idg TDZE Apt Elev	5100 1318 1318
--	------------------------	-----------------------------	---

RNAV (GPS) RWY 7

MERRILL MUNI (R.R.L.)

RNP APCH - GPS.

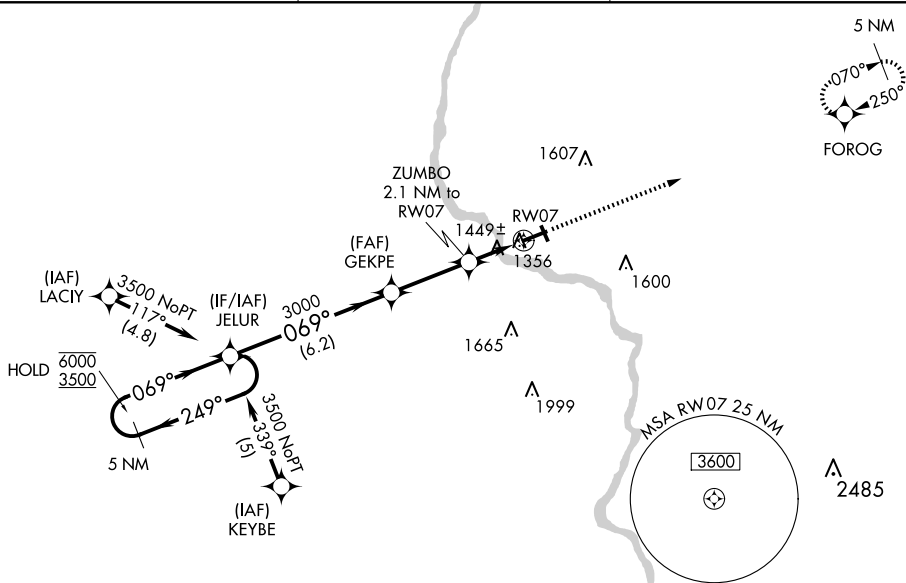
- ▼** Circling Rwy 16, 34 NA at night. Rwy 7 helicopter visibility reduction below 3/4 SM NA.
- ▲** For uncompensated Baro-VNAV systems, LNAV/VNAV NA below -17°C or above 54°C.

MISSED APPROACH:
Climb to 3500 direct
FOROG and hold.

AWOS-3
119.925

MINNEAPOLIS CENTER
124.4 317.7

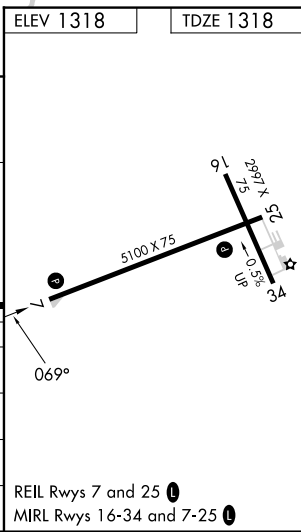
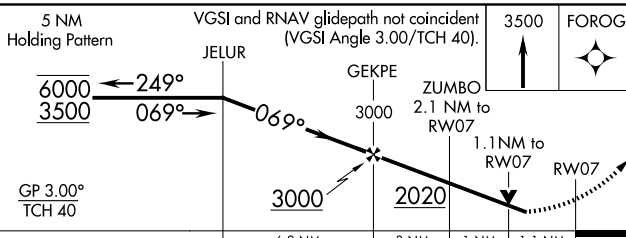
UNICOM
122.8 (CTAF) 0



EC-3, 15 MAY 2025 to 12 JUN 2025

EC-3, 15 MAY 2025 to 12 JUN 2025

ELEV 1318	TDZE 1318
-----------	-----------



CATEGORY	A	B	C	D
LPV DA	1635-1	317 (400-1)		NA
LNAV/VNAV DA	1754-1¼	436 (500-1¼)		NA
LNAV MDA	1700-1	382 (400-1)	1700-1½ 382 (400-1½)	NA
C CIRCLING	1760-1 442 (500-1)	1780-1 462 (500-1)	1920-1¾ 602 (700-1¾)	NA

REIL Rwy 7 and 25 **0**
MIRL Rwy 16-34 and 7-25 **0**