

DENVER TWO DEPARTURE

AL-5715 (FAA)

CENTENNIAL (APA)
DENVER, COLORADO

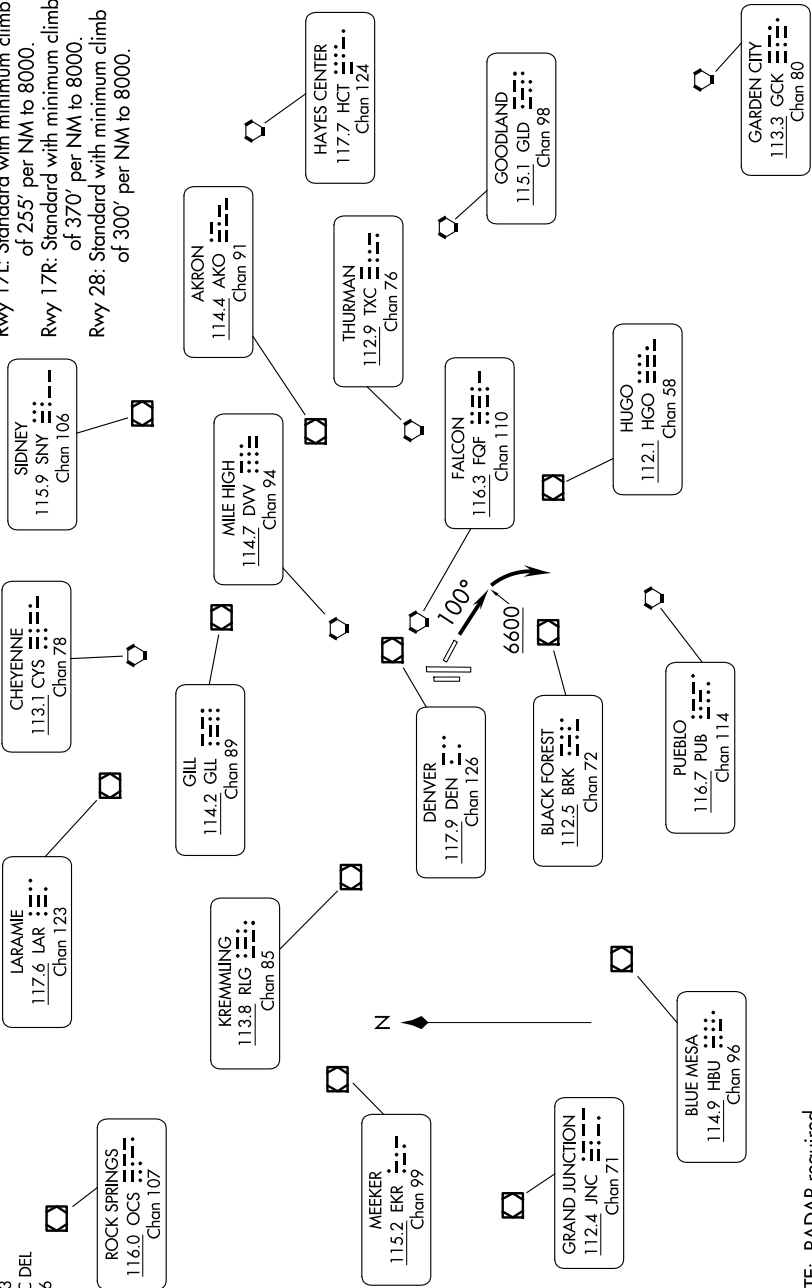
SW-1, 15 MAY 2025 to 12 JUN 2025

TOP ALTITUDE: ASSIGNED BY ATC

DENVER DEP CON
132.75 269.3
ATIS
120.3
CLNC DEL
128.6

TAKEOFF MINIMUMS:

Rwy 10, 35L/R: Standard.
Rwy 17L: Standard with minimum climb of 255' per NM to 8000.
Rwy 17R: Standard with minimum climb of 370' per NM to 8000.
Rwy 28: Standard with minimum climb of 300' per NM to 8000.



(CONTINUED ON FOLLOWING PAGE)

NOTE: RADAR required.
NOTE: Chart not to scale.

DENVER TWO DEPARTURE

30JAN20

DENVER, COLORADO
CENTENNIAL (APA)

SW-1, 15 MAY 2025 to 12 JUN 2025