

WAAS CH <b>63124</b> <b>W05A</b>	APP CRS <b>050°</b>	Rwy Idg TDZE Apt Elev	<b>5001</b> <b>847</b> <b>847</b>
--	------------------------	-----------------------------	---

# RNAV (GPS) RWY 5

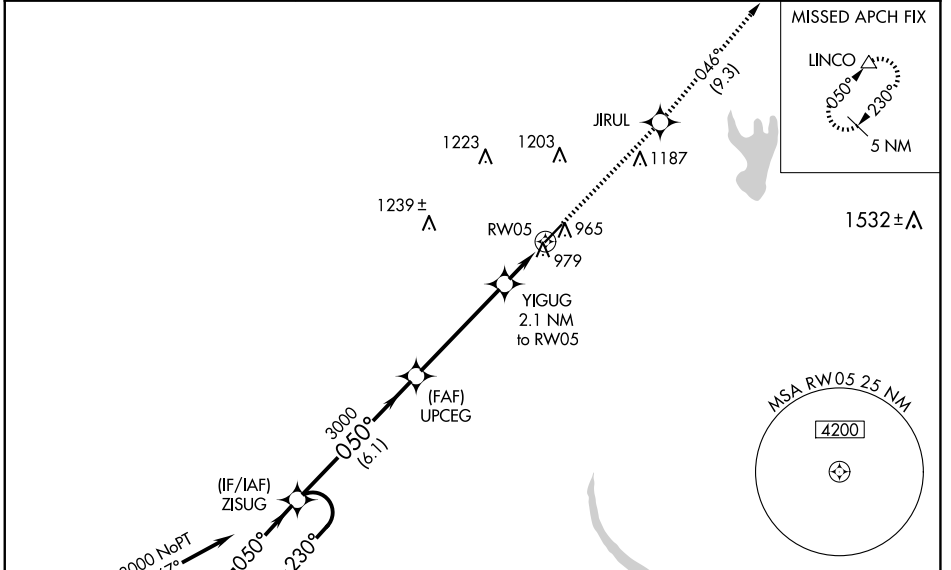
SHELBY-CLEVELAND COUNTY RGNL (EHO)

RNP APCH.

**▽** Baro-VNAV NA when using Charlotte altimeter setting. For uncompensated Baro-VNAV systems, LNAV/VNAV NA below -16°C or above 38°C. Rwy 5 helicopter visibility reduction below 3/4 SM NA. When local altimeter setting not received, use Charlotte altimeter setting and increase all DA 88 feet and all MDA 100 feet; increase LPV all Cats visibility 1/8 SM and LNAV/VNAV all Cats, LNAV Cat C/D visibility 1/4 SM.

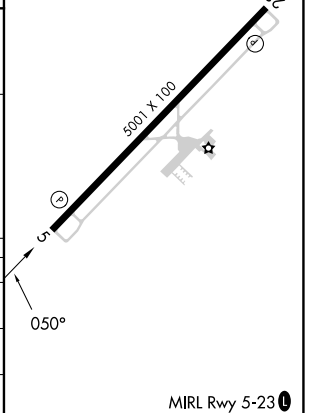
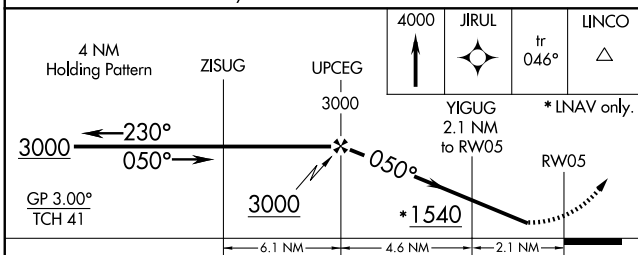
**▲** MISSED APPROACH: Climb to 4000 direct JIRUL and on track 046° to LINCO and hold.

AWOS-3 <b>118.425</b>	CHARLOTTE APP CON <b>120.05 257.2</b>	UNICOM <b>122.8 (CTAF) 0</b>
--------------------------	--	---------------------------------



SPARTANBURG SPA (IAF) Procedure NA for arrivals on SPA VORTAC airway radials 360 CW 103.

ELEV 847	TDZE 847
----------	----------



CATEGORY	A	B	C	D
LPV DA	1097-1		250 (300-1)	
LNAV/VNAV DA	1173-1 1/8		326 (400-1 1/8)	
LNAV MDA	1240-1 393 (400-1)		1240-1 1/8 393 (400-1 1/8)	

SE-2, 15 MAY 2025 to 12 JUN 2025

SE-2, 15 MAY 2025 to 12 JUN 2025