

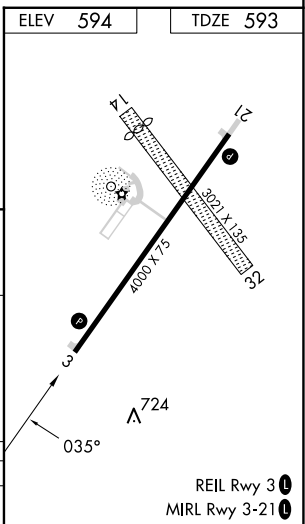
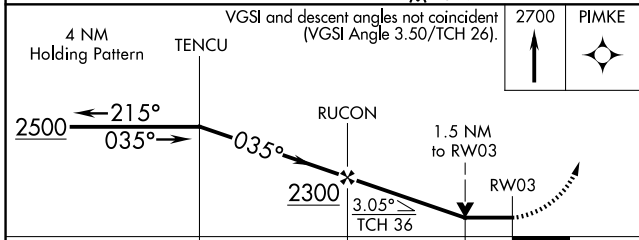
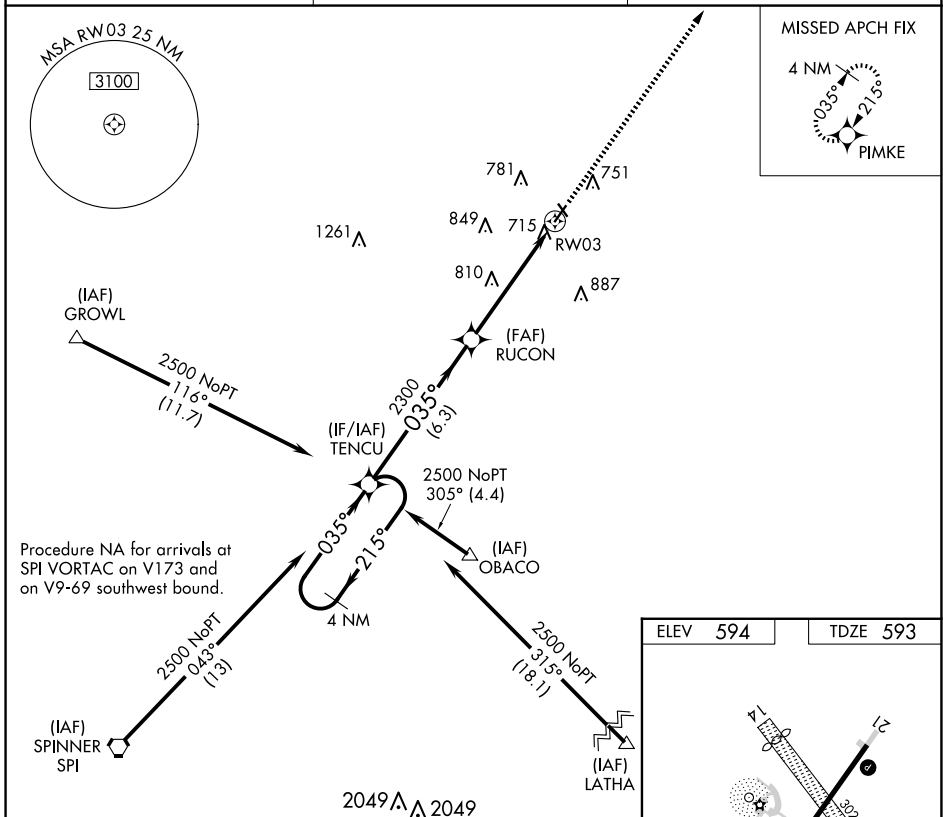
APP CRS	Rwy Idg	<b>4000</b>
<b>035°</b>	TDZE	<b>593</b>
	Apf Elev	<b>594</b>

# RNAV (GPS) RWY 3

LOGAN COUNTY (AAA)

RNP APCH.	MISSED APPROACH: Climb to 2700 direct PIMKE and hold.
<p><b>▼</b> If local altimeter setting not received, use Springfield, IL altimeter setting and increase all MDAs 60 feet. VDP NA with Springfield, IL altimeter setting. Rwy 3 helicopter visibility reduction below <math>\frac{3}{4}</math> SM NA.</p> <p><b>▲</b></p>	

AWOS-3 <b>118.775</b>	SAINT LOUIS APP CON * <b>126.15 323.0</b>	UNICOM <b>122.8 (CTAF) 0</b>
--------------------------	--	---------------------------------



CATEGORY	A	B	C	D
LNAV MDA	1120-1	527 (600-1)	1120-1½ 527 (600-1½)	1120-1¾ 527 (600-1¾)

EC-3, 15 MAY 2025 to 12 JUN 2025

EC-3, 15 MAY 2025 to 12 JUN 2025