

WILDCAT SIX DEPARTURE

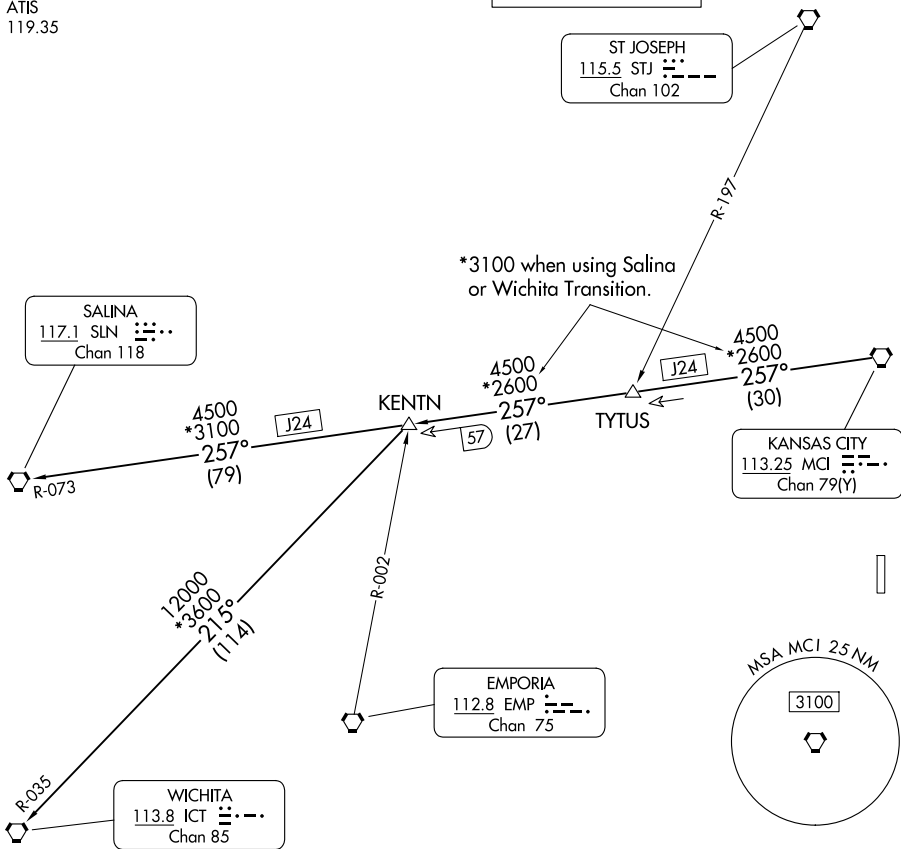
AL-5687 (FAA)

JOHNSON COUNTY EXEC (OJC)
OLATHE, KANSAS

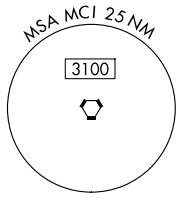
KANSAS CITY DEP CON
118.9 251.075
ATIS
119.35

RADAR required.

**TOP ALTITUDE:
10000**



KANSAS CITY
113.25 MCI
Chan 79(Y)



TAKEOFF MINIMUMS
Rwys 18, 36: Standard.

NOTE: Chart not to scale.

NC-2, 15 MAY 2025 to 12 JUN 2025

NC-2, 15 MAY 2025 to 12 JUN 2025

DEPARTURE ROUTE DESCRIPTION

TAKEOFF ALL RUNWAYS: Climb on assigned heading for RADAR vectors to appropriate route. Maintain 10000, expect filed altitude 10 minutes after departure.

KENTN TRANSITION (WLDCT6.KENTN): From over MCI VORTAC on MCI R-257 to KENTN.

SALINA TRANSITION (WLDCT6.SLN): From over MCI VORTAC on MCI R-257 and SLN R-073 to SLN VORTAC.

WICHITA TRANSITION (WLDCT6.ICT): From over MCI VORTAC on MCI R-257 to KENTN, then on ICT R-035 to ICT VORTAC.

WILDCAT SIX DEPARTURE

(WLDCT6.MCI) 05OCT23

OLATHE, KANSAS
JOHNSON COUNTY EXEC (OJC)