

(TIFTO8.MCI) 23278

TIFTO EIGHT DEPARTURE

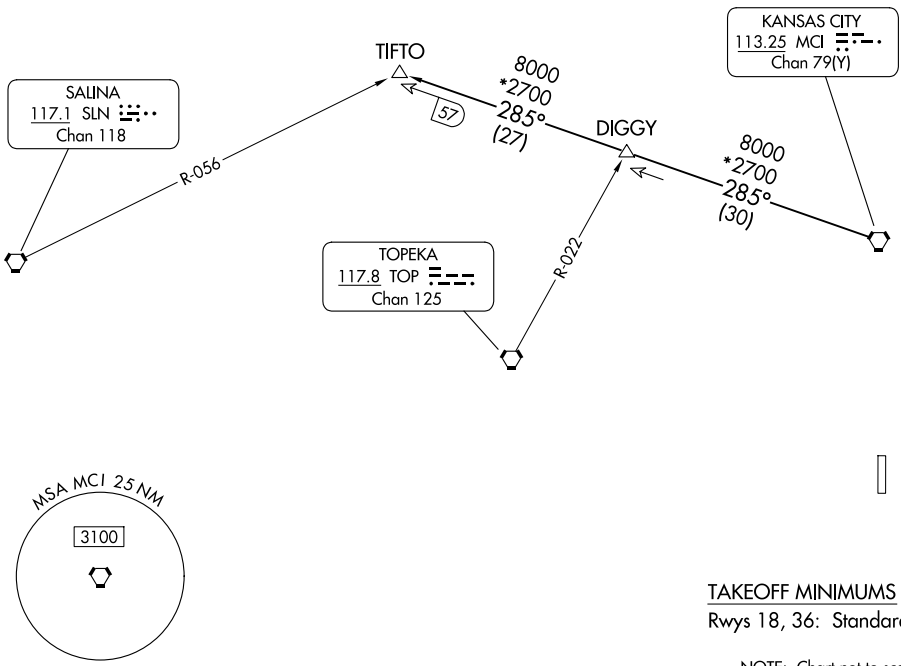
AL-5687 (FAA)

JOHNSON COUNTY EXEC (OJC)
OLATHE, KANSAS

**TOP ALTITUDE:
10000**

RADAR and DME required.

KANSAS CITY DEP CON
118.9 251.075
ATIS
119.35



NC-2, 15 MAY 2025 to 12 JUN 2025

NC-2, 15 MAY 2025 to 12 JUN 2025

TAKEOFF MINIMUMS
Rwys 18, 36: Standard.

NOTE: Chart not to scale



DEPARTURE ROUTE DESCRIPTION

TAKEOFF ALL RUNWAYS: Climb on assigned heading for RADAR vectors to appropriate route. Maintain 10000, expect filed altitude 10 minutes after departure.

TIFTO TRANSITION (TIFTO8.TIFTO): From over MCI VORTAC on MCI R-285 to TIFTO.

TIFTO EIGHT DEPARTURE

(TIFTO8.MCI) 05OCT23

OLATHE, KANSAS
JOHNSON COUNTY EXEC (OJC)