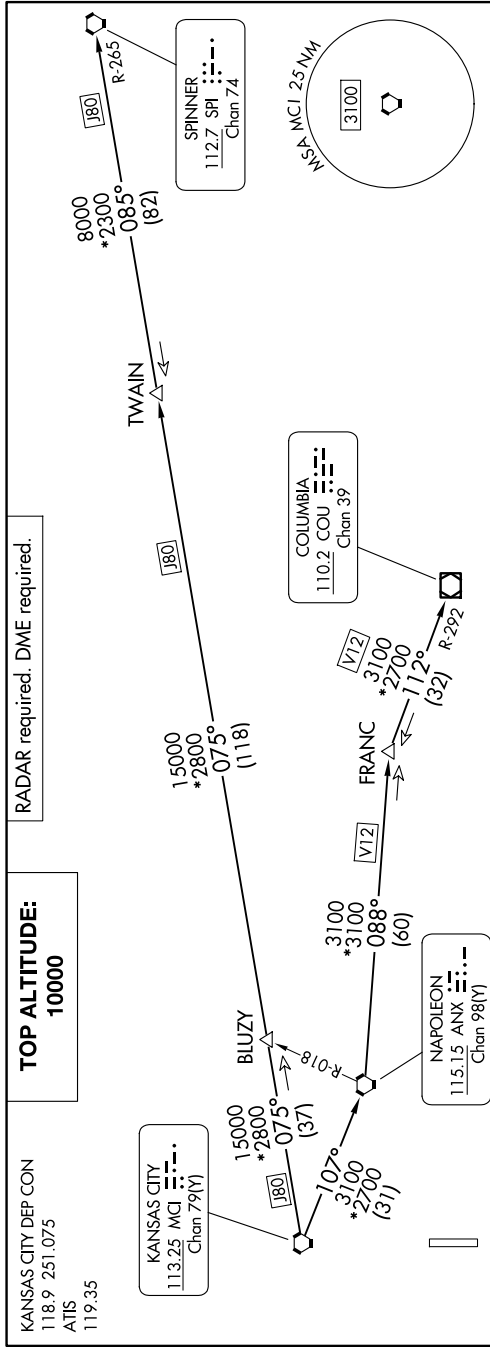


NC-2, 15 MAY 2025 to 12 JUN 2025



**DEPARTURE ROUTE DESCRIPTION**

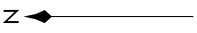
**TAKEOFF ALL RUNWAYS:** Climb on assigned heading for RADAR vectors to appropriate route. Maintain 10000 or as assigned by ATC. Expect filed altitude 10 minutes after departure.

**COLUMBIA TRANSITION [LAKES5.COU]:** From over MCI VORTAC on MCI R-107 to ANX VORTAC, then on ANX R-088 and COU R-292 to COU VOR/DME.

**FRANC TRANSITION [LAKES5.FRANC]:** From over MCI VORTAC on MCI R-107 to ANX VORTAC, then on ANX R-088 to FRANC.

**SPINNER TRANSITION [LAKES5.SPI]:** From over MCI VORTAC on MCI R-075 and SPI R-265 to TWAIN, then on SPI R-265 to SPI VORTAC.

**TWAIN TRANSITION [LAKES5.TWAIN]:** From over MCI VORTAC on MCI R-075 and SPI R-265 to TWAIN.



NC-2, 15 MAY 2025 to 12 JUN 2025

NOTE: Chart not to scale.