

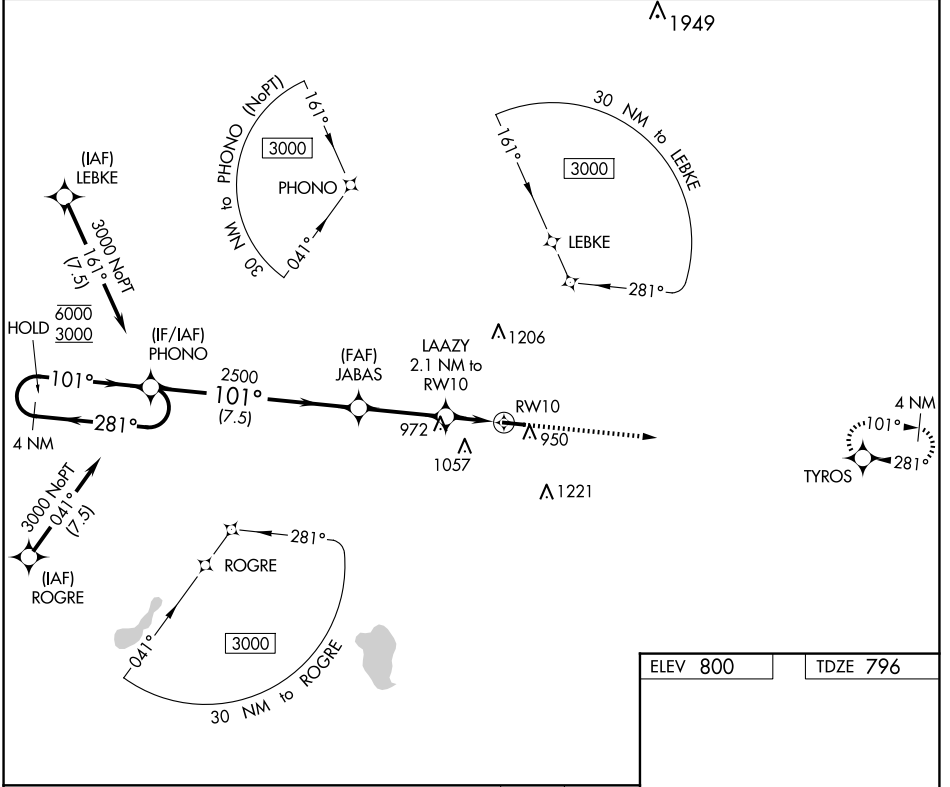
APP CRS <b>101°</b>	Rwy Idg <b>4400</b> TDZE <b>796</b> Apt Elev <b>800</b>
------------------------	---

# RNAV (GPS) RWY 10

PLYMOUTH MUNI (C65)

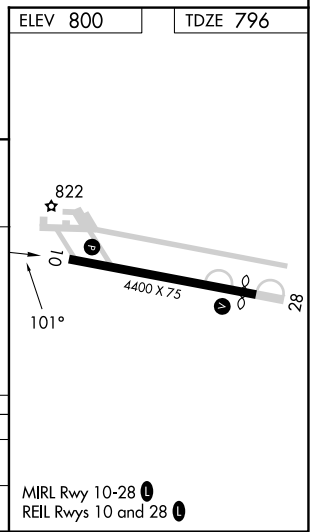
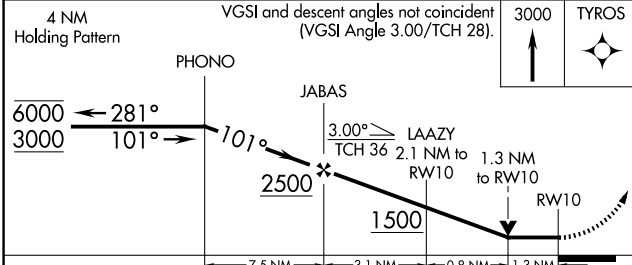
RNP APCH.	MISSED APPROACH: Climb to 3000 direct TYROS and hold.
Circling to Rwy 28 NA at night. Rwy 10 helicopter visibility reduction below 3/4 SM NA.	

AWOS-3 <b>133.025</b>	SOUTH BEND APP CON * <b>132.05 257.8</b>	UNICOM <b>122.975 (CTAF) 0</b>
--------------------------	---	-----------------------------------



EC-2, 15 MAY 2025 to 12 JUN 2025

EC-2, 15 MAY 2025 to 12 JUN 2025



CATEGORY	A	B	C	D
LNAV MDA	1240-1	444 (500-1)	1240-1 3/8 444 (500-1 3/8)	NA
CIRCLING	1280-1 480 (500-1)	1360-1 560 (600-1)	1540-2 740 (800-2)	NA