

VORTAC BNA	APP CRS	Rwy Idg	N/A
<b>114.1</b>	<b>045°</b>	TDZE	N/A
Chan <b>88</b>		Apt Elev	<b>583</b>

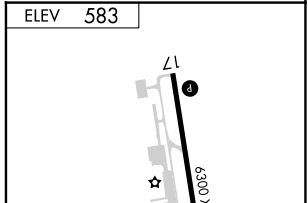
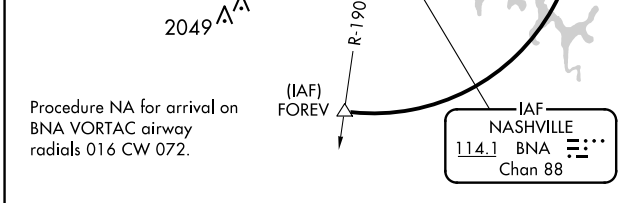
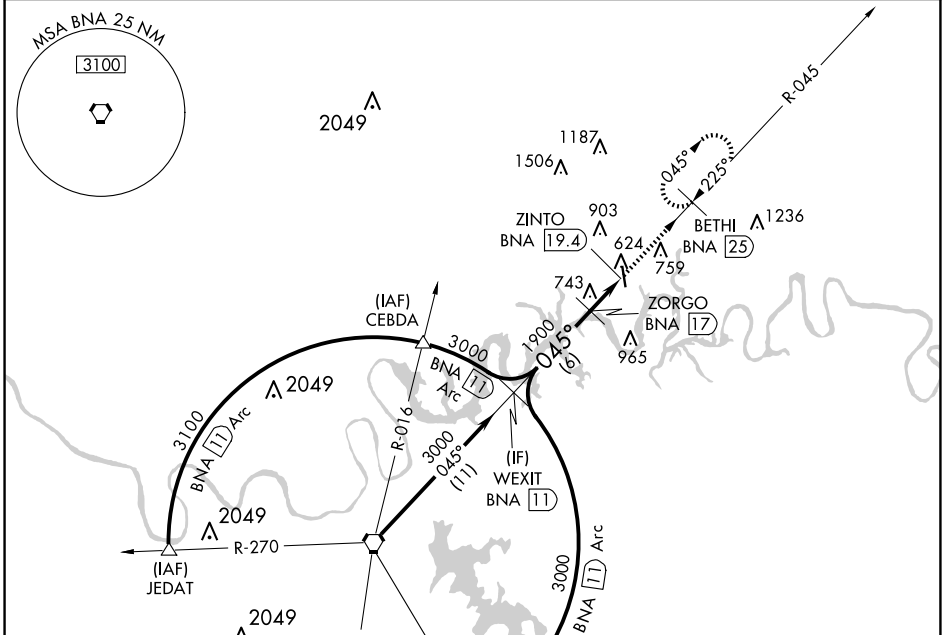
**VOR-A**  
MUSIC CITY EXEC (X.N.X)

DME required.

**▽** When local altimeter setting not received, use Nashville Intl altimeter setting and increase all MDA 60 feet, increase Cat C/D visibility 1/4 mile.

**▲** MISSED APPROACH: Climb to 3000 on BNA VORTAC R-045 to BETHI/25 DME and hold, continue climb-in-hold to 3000.

AWOS-3 <b>132.725</b>	NASHVILLE APP CON <b>118.4 360.7</b>	GCO <b>135.075</b>	UNICOM <b>123.05</b> (CTAF) <b>0</b>
--------------------------	---	-----------------------	---



	WEXIT BNA (11)	ZORGO BNA (17)	ZINTO BNA (19.4)	BETHI BNA (25)
	3000	1900	3000	3000
	6 NM		2.4 NM	

CATEGORY	A	B	C	D	MIRL Rwy 17-35 <b>0</b>	REIL Rwy 17 and 35 <b>0</b>
<b>C</b> CIRCLING	1100-1 517 (600-1)	1120-1 537 (600-1)	1240-1 3/4 657 (700-1 3/4)	1280-2 1/4 697 (700-2 1/4)		

SE-1, 15 MAY 2025 to 12 JUN 2025

SE-1, 15 MAY 2025 to 12 JUN 2025