

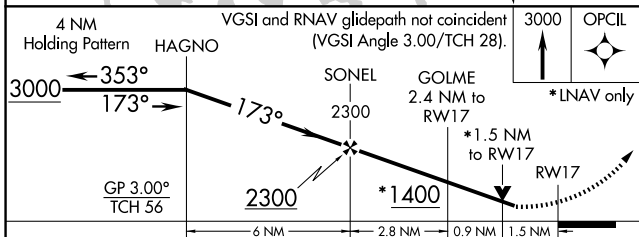
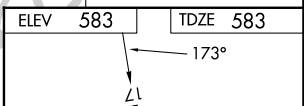
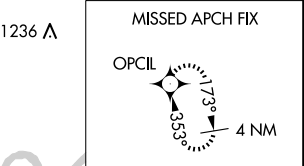
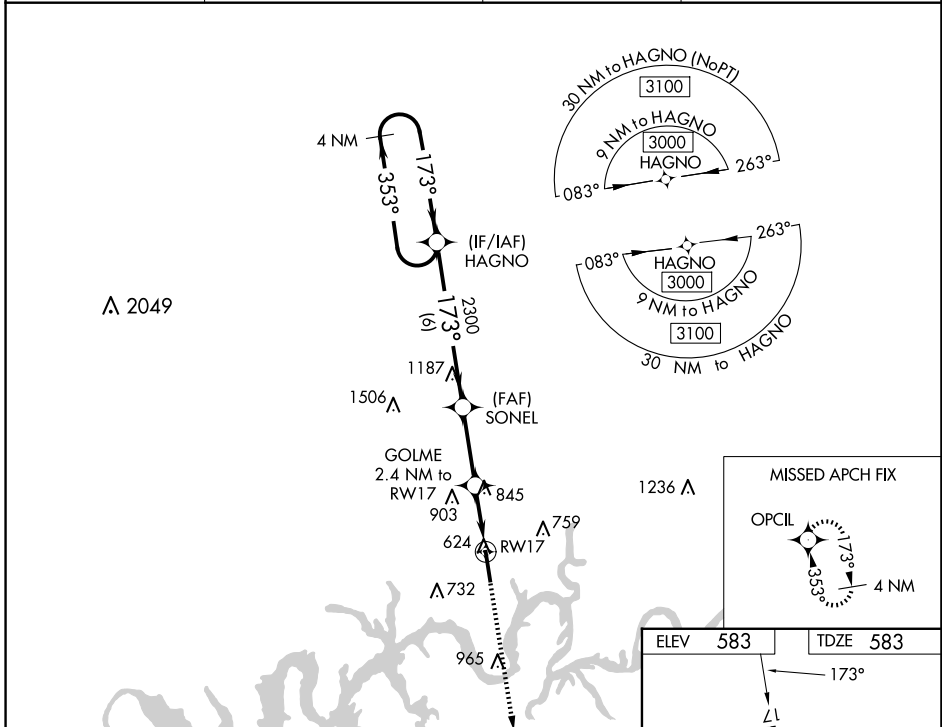
WAAS CH 70725 W17A	APP CRS 173°	Rwy Idg TDZE Apt Elev	6300 583 583
--	------------------------	-----------------------------	---

RNAV (GPS) RWY 17

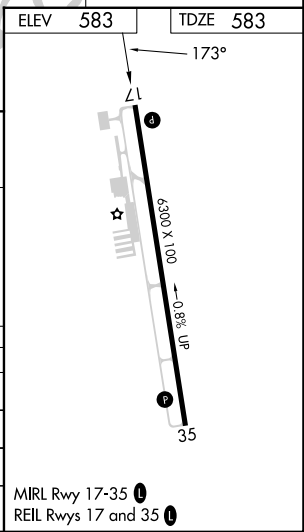
MUSIC CITY EXEC (XNX)

RNP APCH.		MISSED APPROACH: Climb to 3000 direct OPCIL and hold.	
<p>▽ For uncompensated Baro-VNAV systems, LNAV/VNAV NA below -16°C or above 54°C. Rwy 17 helicopter visibility reduction below 3/4 SM NA.</p>			

AWOS-3 132.725	NASHVILLE APP CON 118.4 360.7	GCO 135.075	UNICOM 123.05 (CTAF) 0
--------------------------	---	-----------------------	----------------------------------



CATEGORY	A	B	C	D
LPV DA		1069-1 ³ / ₈	486 (500-1 ³ / ₈)	
LNAV/VNAV DA		1075-1 ³ / ₈	492 (500-1 ³ / ₈)	
LNAV MDA	1100-1	517 (600-1)	1100-1 ³ / ₈	517 (600-1 ³ / ₈)
C CIRCLING	1100-1 517 (600-1)	1120-1 537 (600-1)	1240-1 ³ / ₄ 657 (700-1 ³ / ₄)	1280-2 ¹ / ₄ 697 (700-2 ¹ / ₄)



SE-1, 15 MAY 2025 to 12 JUN 2025

SE-1, 15 MAY 2025 to 12 JUN 2025