

WAAS CH 77713 W06A	APP CRS 061°	Rwy Idg TDZE Apt Elev	4000 786 786
--	------------------------	-----------------------------	---

RNAV (GPS) RWY 6

SENECA COUNTY (16G)

RNP APCH.

NA Circling to Rwy 24 NA at night. Baro-VNAV NA when using Findlay altimeter setting. For uncompensated Baro-VNAV systems, LNAV/VNAV NA below -16°C or above 54°C. When local altimeter setting not received, use Findlay altimeter setting and increase all DA/MDA 60 feet, increase LPV all Cats ¼ SM and LNAV and Circling Cat C visibility ¼ SM.

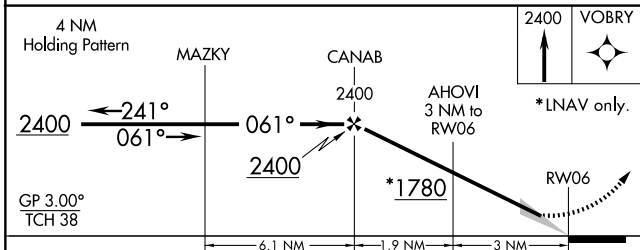
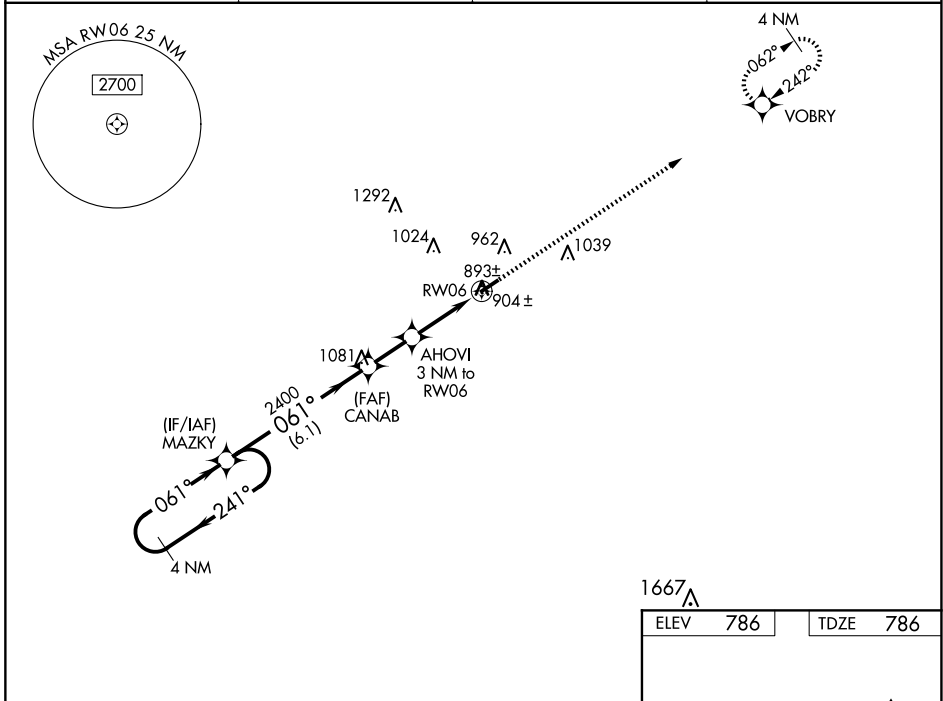
MISSED APPROACH:
Climb to 2400 direct
VOBRY and hold.

AWOS-3
127.175

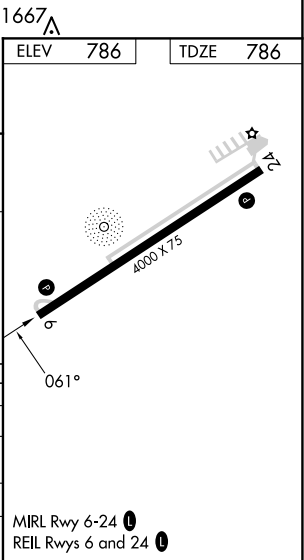
FDY ASOS
132.85

TOLEDO APP CON
120.8 317.55

UNICOM
123.0 (CTAF)



CATEGORY	A	B	C	D
LPV DA	1137-1¼	351 (400-1¼)		NA
LNAV/VNAV DA	1174-1½	388 (400-1½)		NA
LNAV MDA	1160-1	374 (400-1)		NA
CIRCLING	1280-1	494 (500-1)	1340-1½ 554 (600-1½)	NA



MIRL Rwy 6-24 **1**
REIL Rwy 6 and 24 **1**