

VOR/DME MML	APP CRS	Rwy Idg	<b>7221</b>
<b>111.0</b>	<b>130°</b>	TDZE	<b>1183</b>
Chan <b>47</b>		Apt Elev	<b>1183</b>

# VOR RWY 12

SOUTHWEST MINNESOTA RGNL MARSHALL/RYAN FLD (MML)

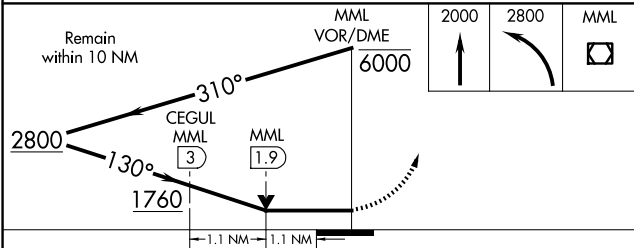
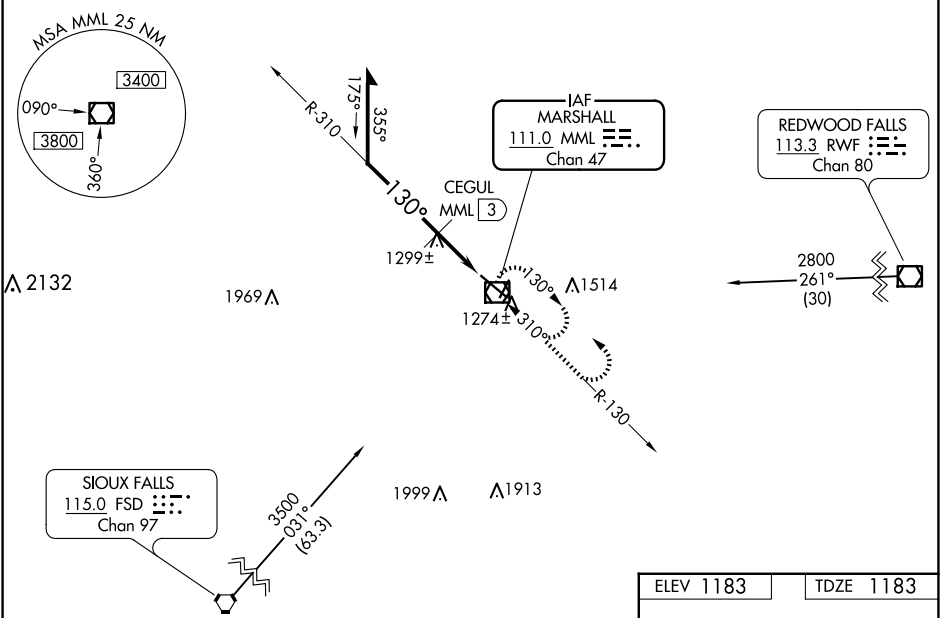
**NA** For inop ALS, increase S-12 Cat C/D visibilities to 1 1/8 SM, CEGUL fix minimums: S-12 Cat C/D visibility to 1 SM. For inop ALS when using Tracy altimeter setting increase S-12 Cat C/D visibilities to 1 1/4 SM. When local altimeter setting not received, use Tracy Muni altimeter setting and increase all MDAs 60 feet, S-12 Cat C/D visibility 1/8; Circling Cat C/D visibility 1/4 SM; CEGUL fix minimums: increase Circling C/D visibility 1/4 SM. VDP NA when using Tracy Muni altimeter setting.

MALS

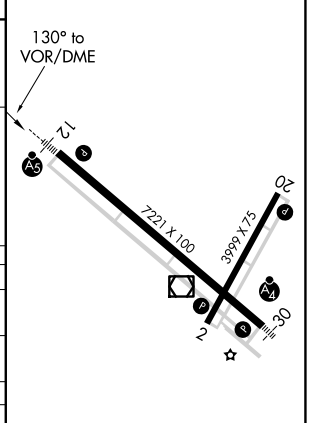


**MISSED APPROACH:** Climb to 2000, then climbing left turn to 2800 direct MML VOR/DME and hold.

AWOS-3PT <b>120.150</b>	MINNEAPOLIS CENTER <b>127.1 290.2</b>	GCO <b>121.725</b>	UNICOM <b>122.8 (CTAF)</b>
----------------------------	--	-----------------------	-------------------------------



ELEV 1183	TDZE 1183
-----------	-----------



CATEGORY	A	B	C	D
S-12	1760-1/2 577 (600-1/2)		1760-1 1/4 577 (600-1 1/4)	
CIRCLING	1760-1 577 (600-1)		1820-1 3/4 637 (700-1 3/4)	1840-2 657 (700-2)
CEGUL FIX MINIMUMS				
S-12	1560-1/2 377 (400-1/2)		1560-3/4 377 (400-3/4)	
CIRCLING	1640-1 457 (500-1)		1820-1 3/4 637 (700-1 3/4)	1840-2 657 (700-2)

HIRL Rwy 12-30  
REIL Rws 2 and 20  
MIRL Rwy 2-20

# VOR RWY 12

NC-1, 15 MAY 2025 to 12 JUN 2025

NC-1, 15 MAY 2025 to 12 JUN 2025