

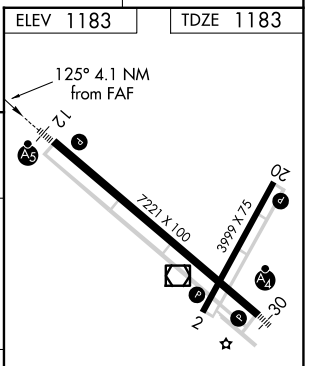
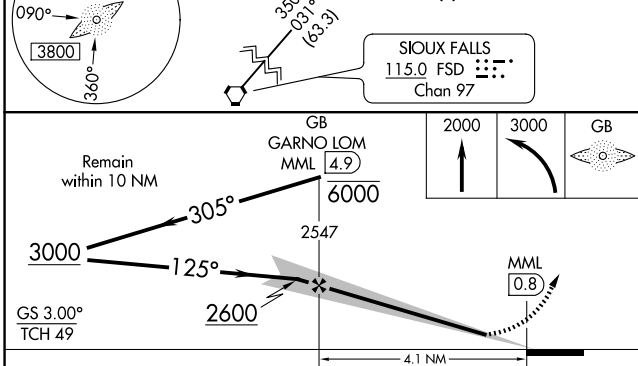
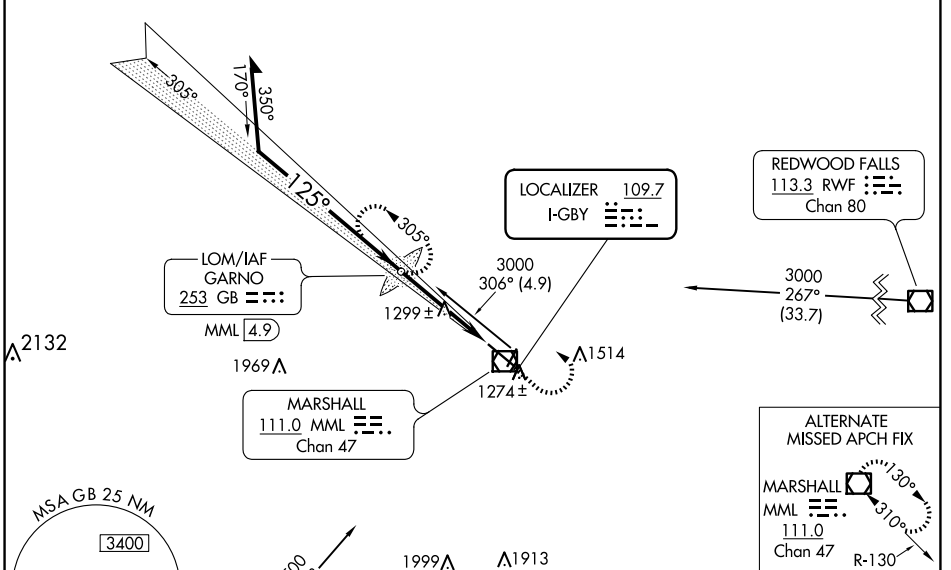
LOC I-GBY 109.7	APP CRS 125°	Rwy Idg TDZE Apt Elev	7221 1183 1183
---------------------------	------------------------	-----------------------------	---

ILS or LOC RWY 12

SOUTHWEST MINNESOTA RGNL MARSHALL/RYAN FLD (MML)

ADF or DME required.	MALSR 	MISSED APPROACH: Climb to 2000 then climbing left turn to 3000 direct GARNO LOM/ MML 4.9 DME and hold.
<p>NA When local altimeter setting not received, use Tracy Muni altimeter setting and increase ILS DA to 1441 feet and all MDA 60 feet, S-LOC Cat C/D visibility 1/8 SM and Circling visibility Cat C/D 1/4 SM. Inop table does not apply. For inop ALS increase S-LOC 12 all Cats visibility to 1 SM. Inop table does not apply when using Tracy Muni altimeter setting. For inop ALS when using Tracy Muni altimeter setting, increase S-LOC 12 Cat A/B visibility to 1 SM.</p>		

AWOS-3PT 120.150	MINNEAPOLIS CENTER 127.1 290.2	GCO 121.725	UNICOM 122.8 (CTAF)
----------------------------	--	-----------------------	-------------------------------



CATEGORY	A	B	C	D
S-ILS 12	1383-1/2 200 (200-1/2)			
S-LOC 12	1560-1/2 377 (400-1/2)	1560-5/8 377 (400-5/8)		
CIRCLING	1640-1 457 (500-1)	1820-1 3/4 637 (700-1 3/4)	1840-2 657 (700-2)	

ELEV 1183	TDZE 1183
HRL Rwy 12-30	
REIL Rws 2 and 20	
MRL Rwy 2-20	
FAF to MAP 4.1 NM	
Knots	60 90 120 150 180
Min:Sec	4:06 2:44 2:03 1:38 1:22

ILS or LOC RWY 12

NC-1, 15 MAY 2025 to 12 JUN 2025

NC-1, 15 MAY 2025 to 12 JUN 2025