

WAAS CH <b>62823</b> <b>W21A</b>	APP CRS <b>206°</b>	Rwy Idg <b>5502</b>
		TDZE <b>315</b>
		Apt Elev <b>315</b>

# RNAV (GPS) RWY 21

SIKESTON MEML MUNI (SIK)

RNP APCH.

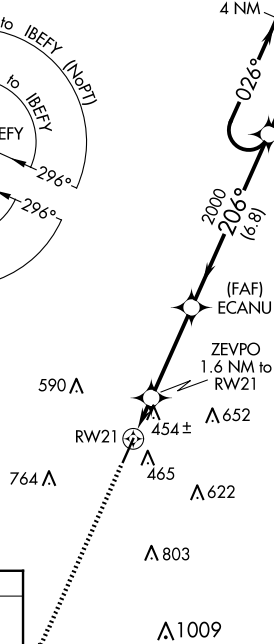
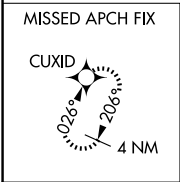
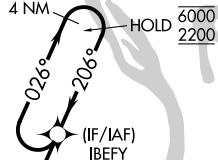
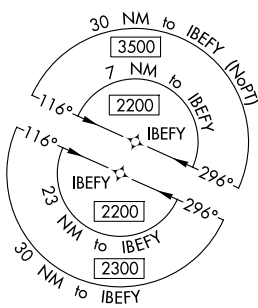
**▽** Rwy 21 helicopter visibility reduction below ¼ SM NA. Baro-VNAV NA when using Cape Girardeau altimeter setting. For uncompensated Baro-VNAV systems, LNAV/VNAV NA below -15°C or above 54°C. When local altimeter setting not received, use Cape Girardeau altimeter setting and increase all DA 49 feet and all MDA 60 feet. Increase LNAV and Circling Cat C/D visibility ¼ SM.

**MISSED APPROACH:** Climb to 2000 direct CUXID and hold.

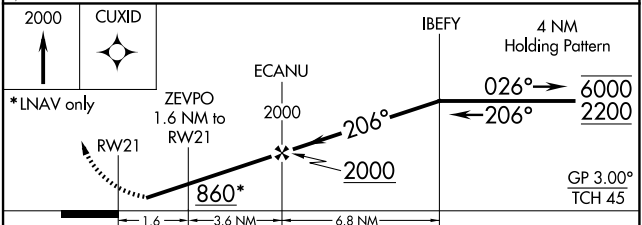
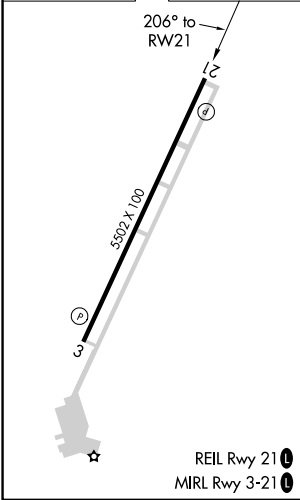
AWOS-3  
**119.175**

MEMPHIS CENTER  
**133.65 292.15**

UNICOM  
**122.8 (CTAF) 0**



ELEV 315 TDZE 315



CATEGORY	A	B	C	D
LPV DA	565-1 250 (300-1)			
LNAV/VNAV DA	761-1 <sup>3</sup> / <sub>8</sub> 446 (500-1 <sup>3</sup> / <sub>8</sub> )			
LNAV MDA	720-1 405 (500-1)		720-1 <sup>1</sup> / <sub>8</sub> 405 (500-1 <sup>1</sup> / <sub>8</sub> )	
<b>CIRCLING</b>	840-1 525 (600-1)	860-1 545 (600-1)	1080-2 <sup>1</sup> / <sub>4</sub> 765 (800-2 <sup>1</sup> / <sub>4</sub> )	1160-2 <sup>3</sup> / <sub>4</sub> 845 (900-2 <sup>3</sup> / <sub>4</sub> )

REIL Rwy 21 **0**  
MIRL Rwy 3-21 **0**

NC-3, 15 MAY 2025 to 12 JUN 2025

NC-3, 15 MAY 2025 to 12 JUN 2025