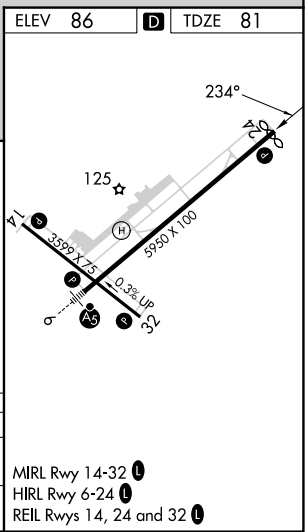
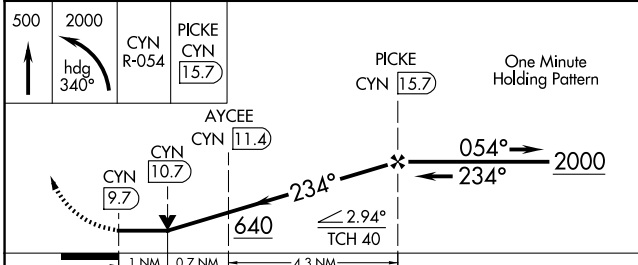
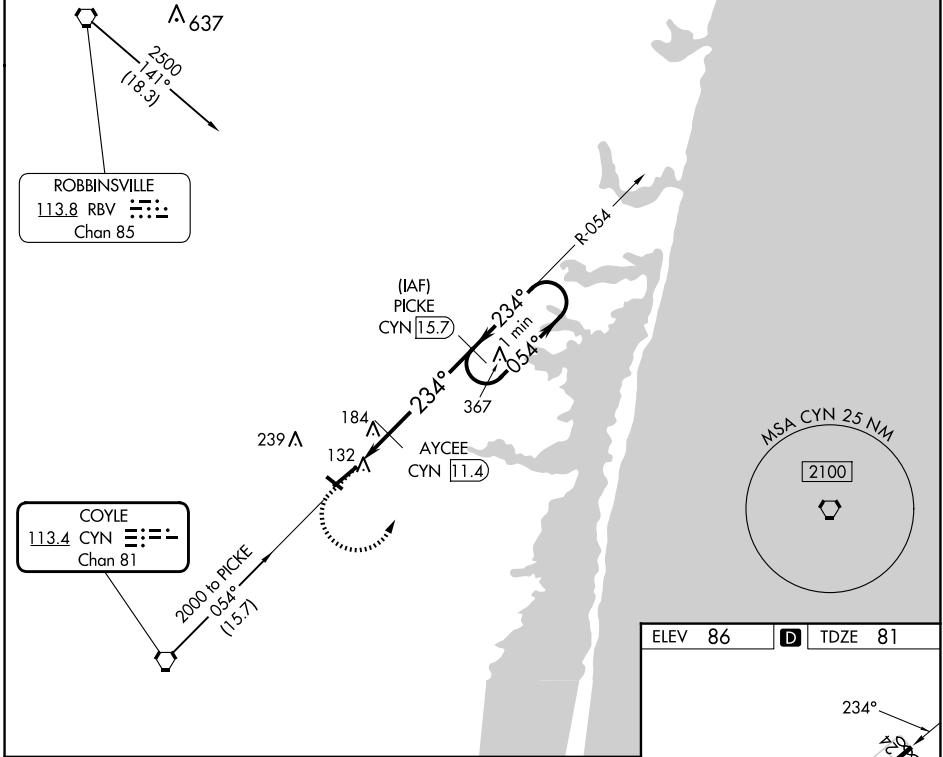


VORTAC CYN 113.4 Chan 81	APP CRS 234°	Rwy Idg TDZE Apt Elev	5835 81 86
--	------------------------	-----------------------------	---------------------------------------

VOR RWY 24

OCEAN COUNTY (MJX)

DME required for procedure entry. DME required.		MISSED APPROACH: Climb to 500 then climbing left turn to 2000 on heading 340° and on CYN VORTAC R-054 to PICKE/CYN 15.7 DME and hold.	
Rwy 24 helicopter visibility reduction below 3/4 SM NA. Circling Rwy 14, 32 NA at night.		AWOS-3PT 119.875	MC GUIRE APP CON 126.475 363.8
		UNICOM 122.7 (CTAF) 0	



ELEV 86	TDZE 81
500	2000
hdg 340°	CYN R-054
PICKE CYN 15.7	AYCEE CYN 11.4
CYN 9.7	CYN 10.7
234°	054°
640	2000
≤ 2.94°	TCH 40
1 NM	0.7 NM
4.3 NM	
CATEGORY	A B C D
S-24	440-1 359 (400-1)
CIRCLING	540-1 560-1 580-1½ 700-2
	454 (500-1) 474 (500-1) 494 (500-1½) 614 (700-2)

MIRL Rwy 14-32
HIRL Rwy 6-24
REIL Rws 14, 24 and 32

NE-2, 15 MAY 2025 to 12 JUN 2025

NE-2, 15 MAY 2025 to 12 JUN 2025