

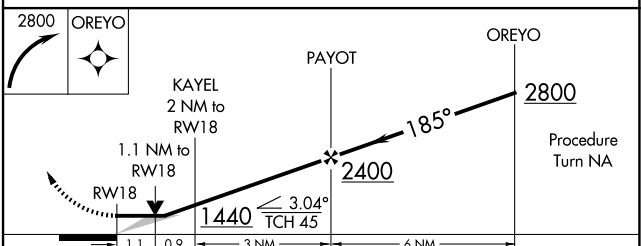
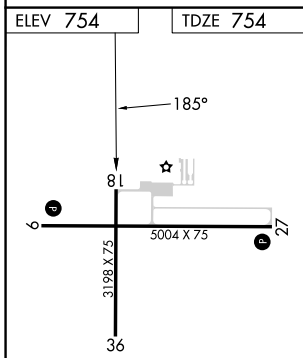
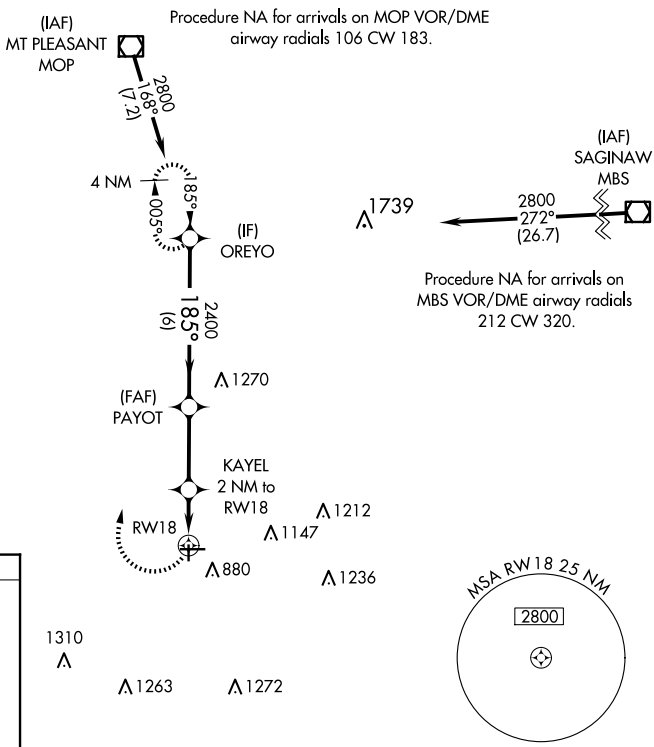
APP CRS <b>185°</b>	Rwy Idg TDZE Apt Elev	<b>3198</b> <b>754</b> <b>754</b>
------------------------	-----------------------------	---

# RNAV (GPS) RWY 18

GRATIOT COMMUNITY (A.MN)

RNP APCH.	MISSED APPROACH: Climbing right turn to 2800 direct OREYO WP and hold.
Procedure NA at night.	

AWOS-3P <b>124.175</b>	GREAT LAKES APP CON* <b>126.45 235.625</b>	UNICOM <b>122.8 (CTAF) 0</b>
---------------------------	---	---------------------------------



REIL Rwy 9 and 27 MIRL Rwy 9-27 and 18-36	CATEGORY	A	B	C	D
	LNAV MDA	1160-1	406 (500-1)	1160-1¼ 406 (500-1¼)	NA

EC-1, 15 MAY 2025 to 12 JUN 2025

EC-1, 15 MAY 2025 to 12 JUN 2025