

| | | |
|-------------|----------|-------------|
| APP CRS | Rwy Idg | 4401 |
| 092° | TDZE | 796 |
| | Apt Elev | 796 |

RNAV (GPS) RWY 9

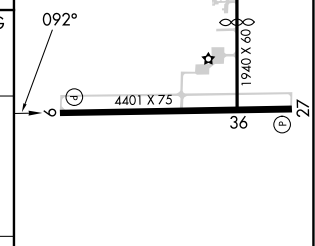
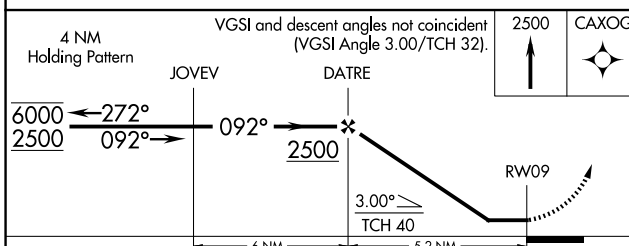
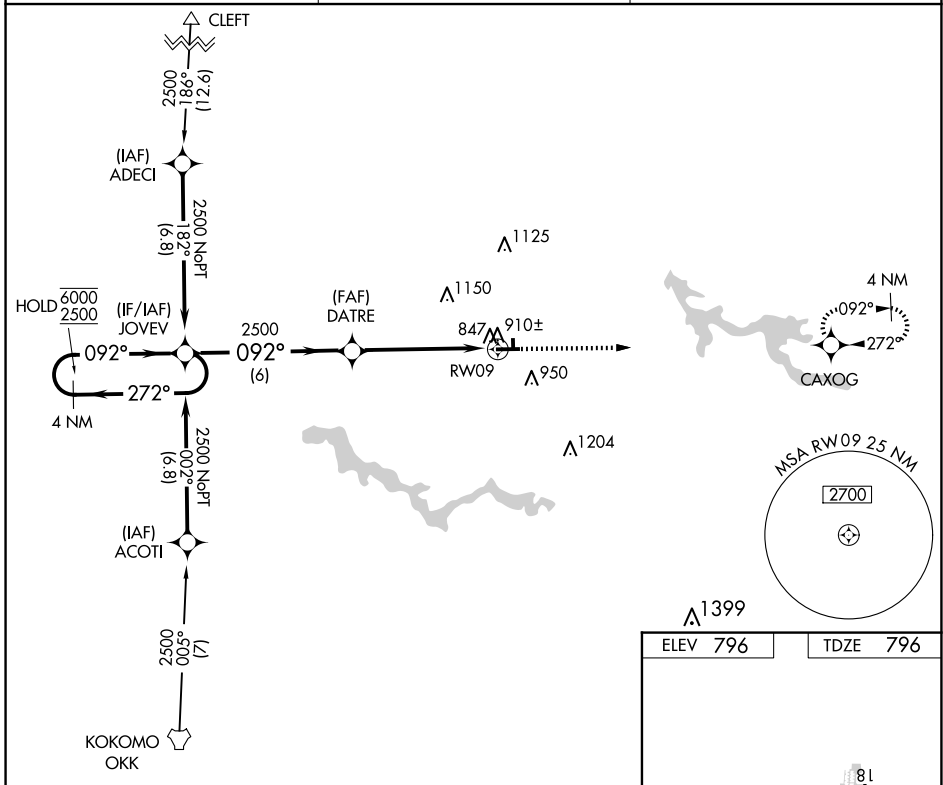
WABASH MUNI (IWH)

RNP APCH - GPS.

⚠ Circling Rwy 9, 18, 36 NA at night. Rwy 9 helicopter visibility reduction below 1 SM NA.
⚠ NA Use Kokomo altimeter setting; when not received, use Marion altimeter setting and increase all MDAs 40 feet and visibility LNAV Cat C ¼ SM.

MISSED APPROACH: Climb to 2500 direct CAXOG and hold.

| | | |
|--------------------------------|--|---------------------------------|
| OKK AWOS-3PT 128.675 | GRISSOM APP CON ★ 121.05 338.275 | UNICOM 122.8 (CTAF) 0 |
|--------------------------------|--|---------------------------------|



| CATEGORY | A | B | C | D |
|-------------------|-----------------------|-----------------------|-------------------------|----|
| LNAV MDA | 1200-1 | 404 (500-1) | 1200-1½ 404 (500-1½) | NA |
| C CIRCLING | 1260-1 464 (500-1) | 1340-1 544 (600-1) | 1540-2¼ 744 (800-2¼) | NA |

IURL Rwy 18-36
 MURL Rwy 9-27 **0**
 REIL Rws 9 and 27 **0**

EC-2, 15 MAY 2025 to 12 JUN 2025

EC-2, 15 MAY 2025 to 12 JUN 2025