

WAAS CH 97320 W26A	APP CRS 255°	Rwy Idg TDZE Apt Elev	4858 636 650
--	------------------------	-----------------------------	---

RNAV (GPS) RWY 26R

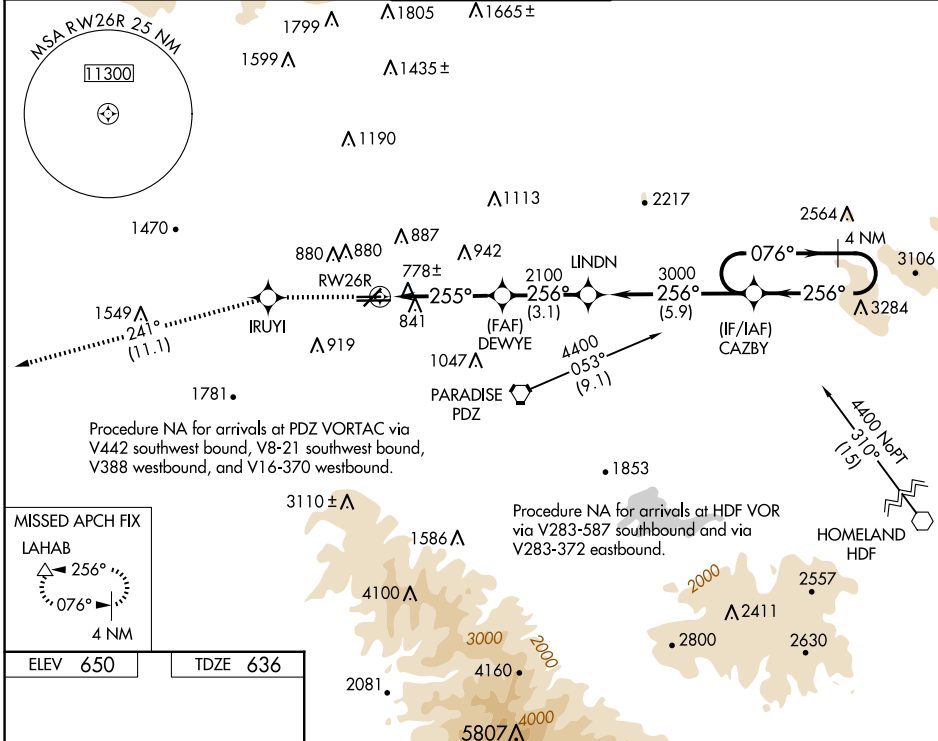
CHINO (CNO)

RNP APCH-GPS.

⚠ For uncompensated Baro-VNAV systems, LNAV/VNAV NA below -16°C or above 54°C. Helicopter visibility reduction below ¼ SM NA.

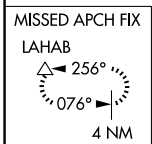
MISSED APPROACH: Climb to 4000 direct IRUYI and via 241° track to LAHAB and hold.

ATIS 125.85	SOCAL APP CON 135.4 377.125	CHINO TOWER * 118.5 (CTAF)	GND CON 121.6	UNICOM 122.95
-----------------------	---------------------------------------	--------------------------------------	-------------------------	-------------------------

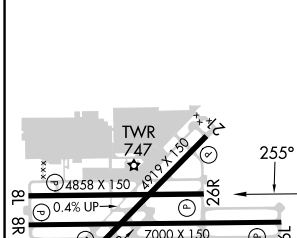


SW-3, 15 MAY 2025 to 12 JUN 2025

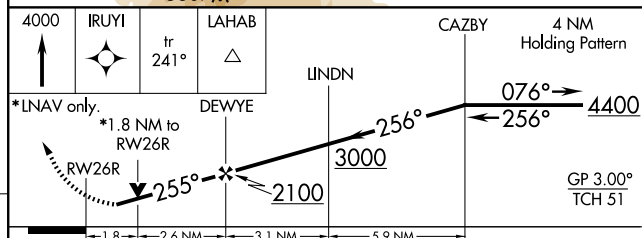
SW-3, 15 MAY 2025 to 12 JUN 2025



ELEV 650	TDZE 636
----------	----------



REIL Rwy 3 and 21	MIRL Rwy 3-21 and 8R-26L	HIRL Rwy 8L-26R
-------------------	--------------------------	-----------------



CATEGORY	A	B	C	D
LPV DA		1030-1¼	394 (400-1¼)	
LNAV/VNAV DA		1177-2	541 (600-2)	
LNAV MDA	1260-1	624 (700-1)	1260-1¾ 624 (700-1¾)	1260-2 624 (700-2)
CIRCLING		1260-1¾	610 (700-1¾)	1340-2¼ 690 (700-2¼)