

MELFA, VIRGINIA

AL-5598 (FAA)

22251

WAAS CH <b>42905</b> <b>W03A</b>	APP CRS <b>034°</b>	Rwy Idg <b>5000</b> TDZE <b>47</b> Apt Elev <b>48</b>
--	------------------------	---

# RNAV (GPS) RWY 3

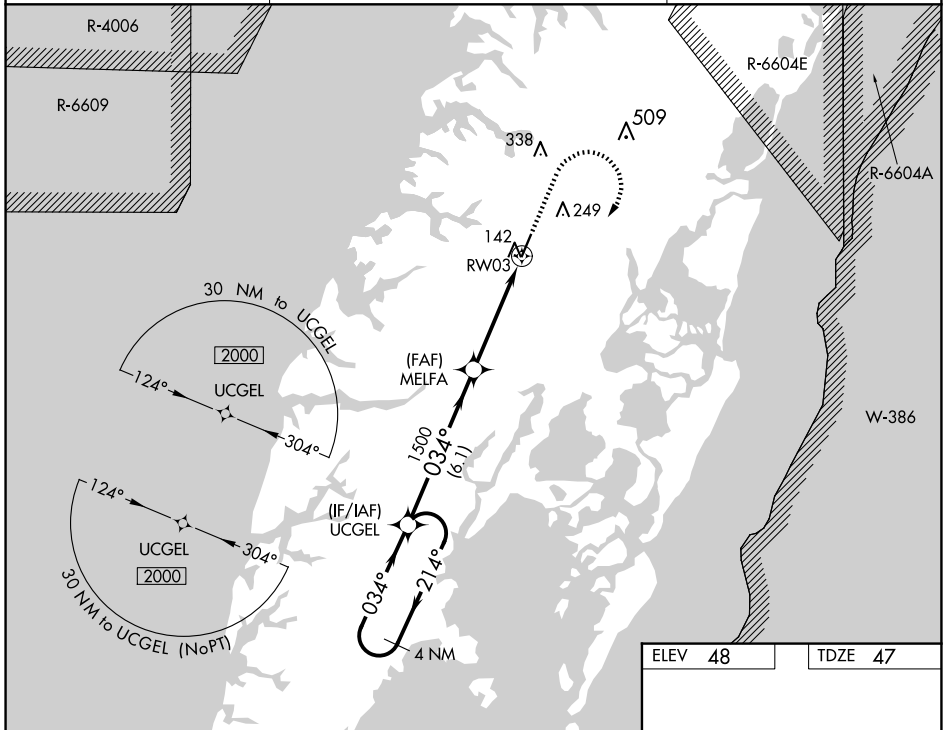
ACCOMACK COUNTY (MFV)

RNP APCH-GPS.

**▼** For uncompensated Baro-VNAV systems, LNAV/VNAV NA below -15°C or above 54°C. Rwy 3 helicopter visibility reduction below 3/4 SM NA.

MISSED APPROACH: Climb to 500 then climbing right turn to 2000 direct UCGEL and hold.

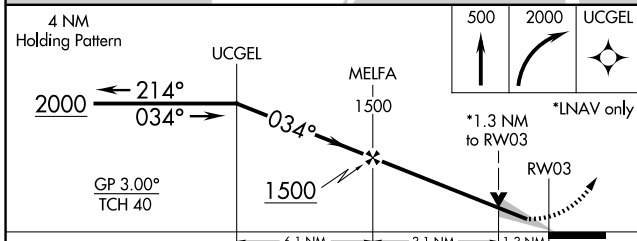
AWOS-3 <b>118.175</b>	PATUXENT APP CON* <b>127.95 314.0</b>	UNICOM <b>122.8 (CTAF) 0</b>
--------------------------	--	---------------------------------



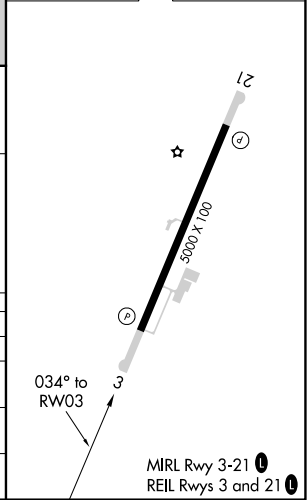
NE-3, 15 MAY 2025 to 12 JUN 2025

NE-3, 15 MAY 2025 to 12 JUN 2025

ELEV <b>48</b>	TDZE <b>47</b>
----------------	----------------



CATEGORY	A	B	C	D
LPV DA		297-1	250 (300-1)	
LNAV/VNAV DA		349-1	302 (400-1)	
LNAV MDA	500-1	453 (500-1)	500-1 3/8	453 (500-1 3/8)
<b>C</b> CIRCLING	500-1 452 (500-1)	560-1 512 (600-1)	700-1 3/4 652 (700-1 3/4)	700-2 652 (700-2)



MELFA, VIRGINIA  
Amdt 2B 11AUG22

37°39'N-75°46'W

# ACCOMACK COUNTY (MFV)

## RNAV (GPS) RWY 3

MIRL Rwy 3-21 0  
REIL Rwy 3 and 21 0