

LOC/DME I-FGH <b>109.35</b> Chan <b>30 (Y)</b>	APP CRS <b>041°</b>	Rwy Idg <b>4775</b> TDZE <b>58</b> Apt Elev <b>72</b>
--	------------------------	---

# ILS or LOC RWY 4

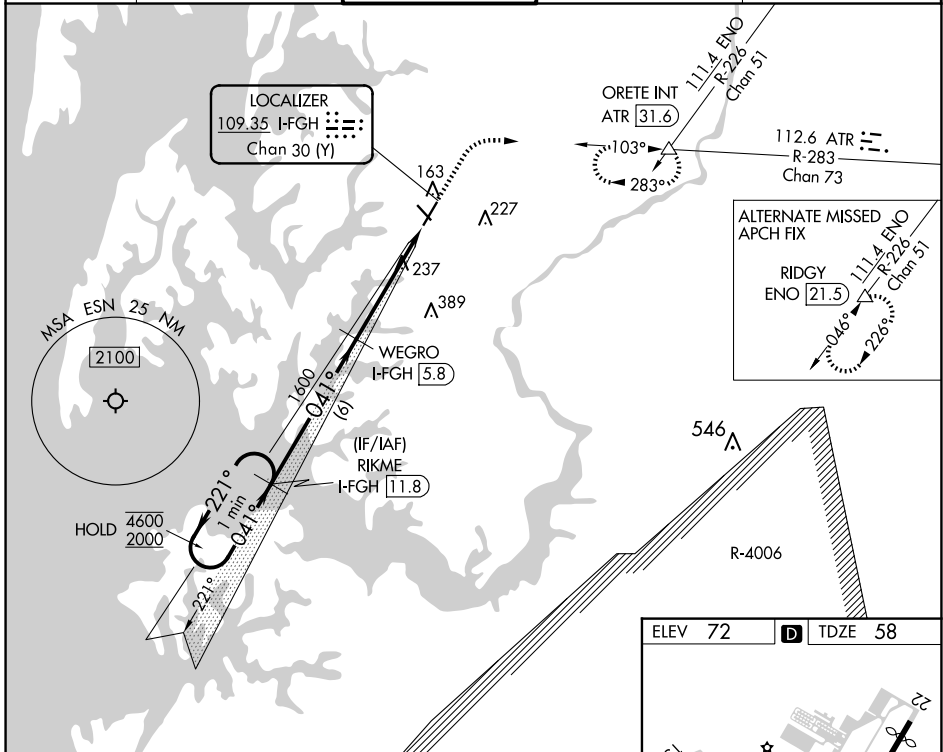
EASTON/NEWNAM FLD (ESN)

RADAR and DME required for procedure entry. DME required for LOC only.

**▼** Circling Rwy 15, 33 NA at night. Autopilot coupled approach NA below 1000.

MISSED APPROACH: Climb to 2000 on heading 041° and on ATR VOR/DME R-283 to ORETE INT/ATR 31.6 DME and hold.

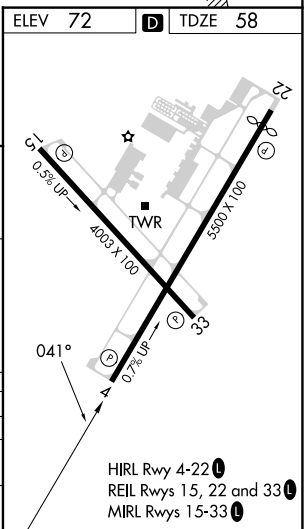
ATIS <b>124.475</b>	POTOMAC APP CON <b>133.75 254.35</b>	EASTON TOWER * <b>118.525 (CTAF) 1</b>	GND CON <b>119.075</b>	CLNC DEL <b>119.075</b>
------------------------	---	---	---------------------------	----------------------------



NE-3, 15 MAY 2025 to 12 JUN 2025

NE-3, 15 MAY 2025 to 12 JUN 2025

One Minute Holding Pattern	GS unusable below 600.	2000	ATR R-283	ORETE
4600 ← 221°	RIKME I-FGH 11.8	↑ hdg 041°		△
2000 → 041°	WEGRO I-FGH 5.8	* I-FGH 2.5		
GS 3.00° TCH 44	1600	I-FGH 1		* LOC only
	6 NM	3.4 NM	1.4 NM	
CATEGORY	A	B	C	D
S-ILS 4		600-1 <sup>5</sup> / <sub>8</sub>	542 (600-1 <sup>5</sup> / <sub>8</sub> )	
S-LOC 4	540-1	482 (500-1)	540-1 <sup>3</sup> / <sub>8</sub>	482 (500-1 <sup>3</sup> / <sub>8</sub> )
<b>C</b> CIRCLING	540-1 468 (500-1)	640-1 568 (600-1)	640-1 <sup>1</sup> / <sub>2</sub> 568 (600-1 <sup>1</sup> / <sub>2</sub> )	740-2 <sup>1</sup> / <sub>4</sub> 668 (700-2 <sup>1</sup> / <sub>4</sub> )



HIRL Rwy 4-22 1  
REIL Rws 15, 22 and 33 1  
MIRL Rws 15-33 1