


WAAS CH 56213 W24A	APP CRS 244°	Rwy ldg TDZE Apt Elev	5130 817 823
--	------------------------	-----------------------------	---

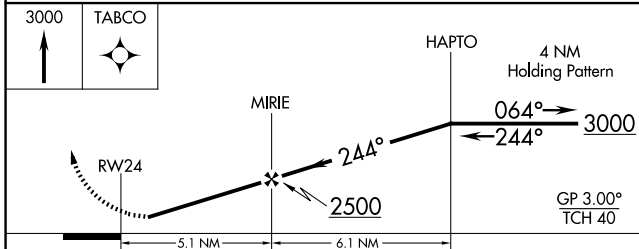
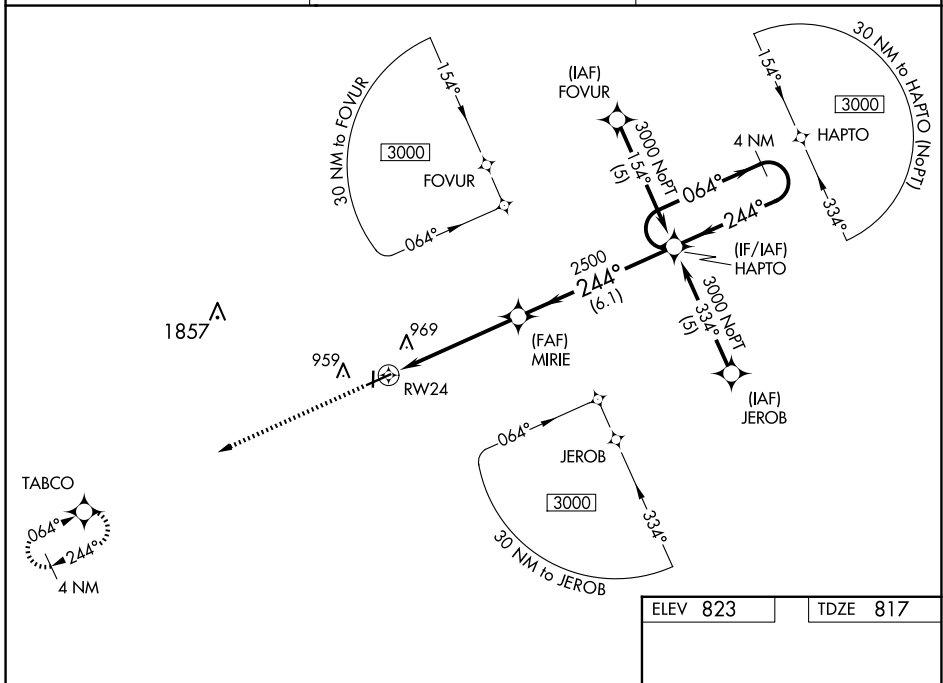
RNAV (GPS) RWY 24

MEXICO MEML (MYJ)

NA Helicopter visibility reduction below ¾ SM NA. Inoperative table does not apply. DME/DME RNP-0.3 NA. For uncompensated Baro-VNAV systems, LNAV/VNAV NA below -16°C (4°F) or above 54°C (130°F). When local altimeter setting not received, use Columbia Rgnl altimeter setting; increase LPV DA to 1200 feet; increase LNAV/VNAV DA to 1352 feet; increase all MDAs 80 feet and Circling visibility Cat C ½ SM. Baro-VNAV NA when using Columbia Rgnl altimeter setting.



MALS  MISSED APPROACH: Climb to 3000 direct TABCO and hold.

AWOS-3PT 120.575	MIZZU APP CON 124.375	CTAF 122.9
----------------------------	---------------------------------	----------------------



CATEGORY	A	B	C	D
LPV DA	1126-1	309 (400-1)		NA
LNAV/VNAV DA	1278-1¾	461 (500-1¾)		NA
LNAV MDA	1220-1	403 (400-1)	1220-1¼ 403 (400-1¼)	NA
CIRCLING	1280-1	457 (500-1)	1420-1½ 597 (600-1½)	NA

ELEV 823	TDZE 817
----------	----------

REIL Rwy 18 
MRL Rwy 6-24 and 18-36 

NC-3, 15 MAY 2025 to 12 JUN 2025

NC-3, 15 MAY 2025 to 12 JUN 2025