

WAAS CH <b>48816</b> <b>W26A</b>	APP CRS <b>257°</b>	Rwy Idg TDZE Apt Elev	<b>5205</b> <b>2586</b> <b>2591</b>
--	------------------------	-----------------------------	---

# RNAV (GPS) RWY 26

HAVRE CITY-COUNTY (HVR)

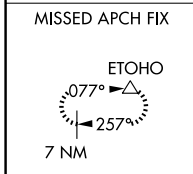
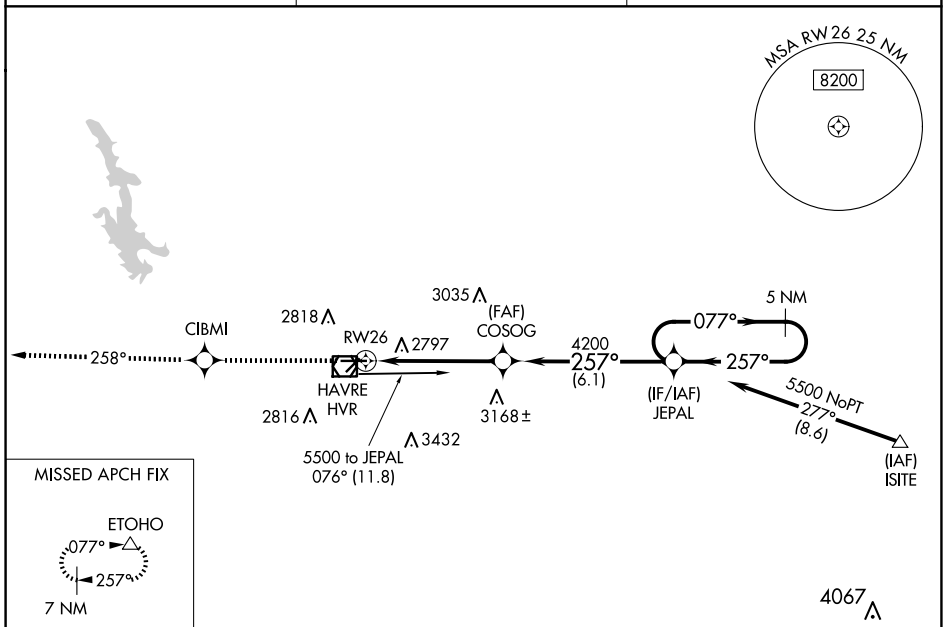
RNP APCH-GPS.  
 For uncompensated Baro-VNAV systems, LNAV/VNAV NA below -20°C or above 54°C.

MISSED APPROACH: Climb to 8000 direct CIBMI and on track 258° to ETOHO and hold, continue climb-in-hold to 8000.

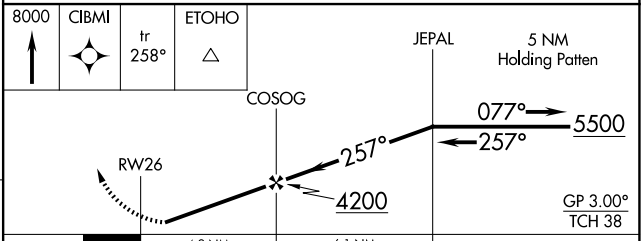
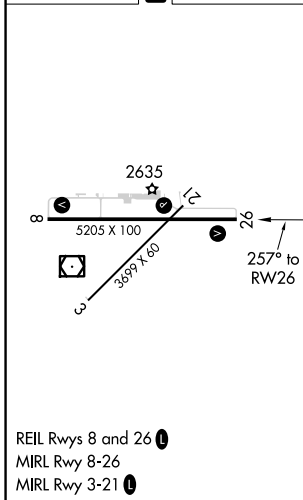
ASOS  
**135.225**

SALT LAKE CENTER  
**133.4 285.4**

UNICOM  
**122.8 (CTAF) 0**



ELEV 2591	<b>D</b>	TDZE 2586
-----------	----------	-----------



CATEGORY	A	B	C	D
LPV DA	2836- <sup>3</sup> / <sub>4</sub>		250 (300- <sup>3</sup> / <sub>4</sub> )	
LNAV/ VNAV DA	3097-1 <sup>3</sup> / <sub>4</sub>		511 (600-1 <sup>3</sup> / <sub>4</sub> )	
LNAV MDA	3060-1	474 (500-1)	3060-1 <sup>1</sup> / <sub>4</sub> 474 (500-1 <sup>1</sup> / <sub>4</sub> )	3060-1 <sup>1</sup> / <sub>2</sub> 474 (500-1 <sup>1</sup> / <sub>2</sub> )
CIRCLING	3080-1 489 (500-1)	3120-1 529 (600-1)	3360-2 <sup>1</sup> / <sub>4</sub> 769 (800-2 <sup>1</sup> / <sub>4</sub> )	3740-3 1149 (1200-3)

NW-1, 15 MAY 2025 to 12 JUN 2025

NW-1, 15 MAY 2025 to 12 JUN 2025