

# WYLSN EIGHT DEPARTURE (RNAV)

HOUSTON, TEXAS

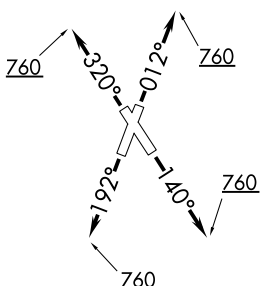
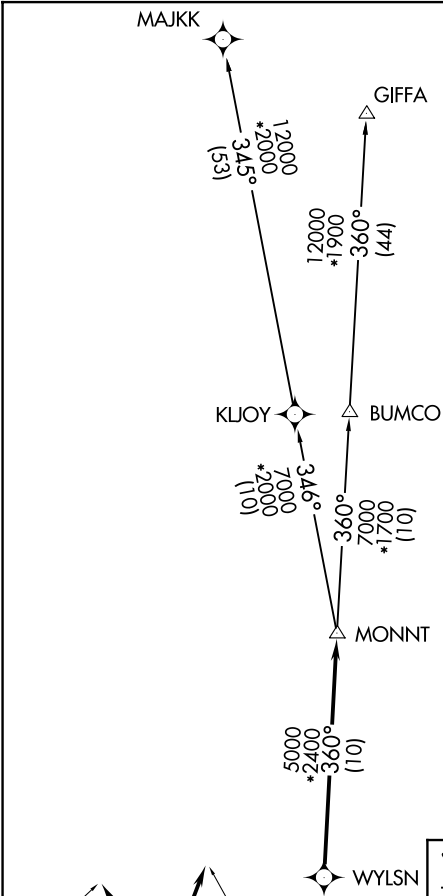
**TOP ALTITUDE:  
ASSIGNED BY ATC**

- ATIS 118.325
- CLNC DEL 120.45
- CLNC DEL 119.55 (when hwr closed)
- GND CON 120.45
- CONROE TOWER \* 124.125 (CTAF)
- HOUSTON DEP CON 119.7 281.4

- NOTE: RADAR required.
- NOTE: DME/DME/IRU or GPS required.
- NOTE: RNAV 1.

TAKEOFF MINIMUMS

Rwys 1, 14, 19, 32: Standard with minimum climb of 500' per NM to 760.



**DEPARTURE ROUTE DESCRIPTION**

TAKEOFF RUNWAY 1: Climb on heading 012° to 760 for RADAR vectors to WYLSN, thence. . . .

TAKEOFF RUNWAY 14: Climb on heading 140° to 760 for RADAR vectors to WYLSN, thence. . . .

TAKEOFF RUNWAY 19: Climb on heading 192° to 760 for RADAR vectors to WYLSN, thence. . . .

TAKEOFF RUNWAY 32: Climb on heading 320° to 760 for RADAR vectors to WYLSN, thence. . . .

. . . .on track 360° to MONNT, then on (transition). Maintain ATC assigned altitude. Expect filed altitude 10 minutes after departure.

GIFFA TRANSITION (WYLSN8.GIFFA)

MAJJK TRANSITION (WYLSN8.MAJKK)

NOTE: Chart not to scale.

SC-5, 15 MAY 2025 to 12 JUN 2025

SC-5, 15 MAY 2025 to 12 JUN 2025

# WYLSN EIGHT DEPARTURE (RNAV)

(WYLSN8.WYLSN) 07OCT21

HOUSTON, TEXAS

CONROE/NORTH HOUSTON RGNL (CXXO)