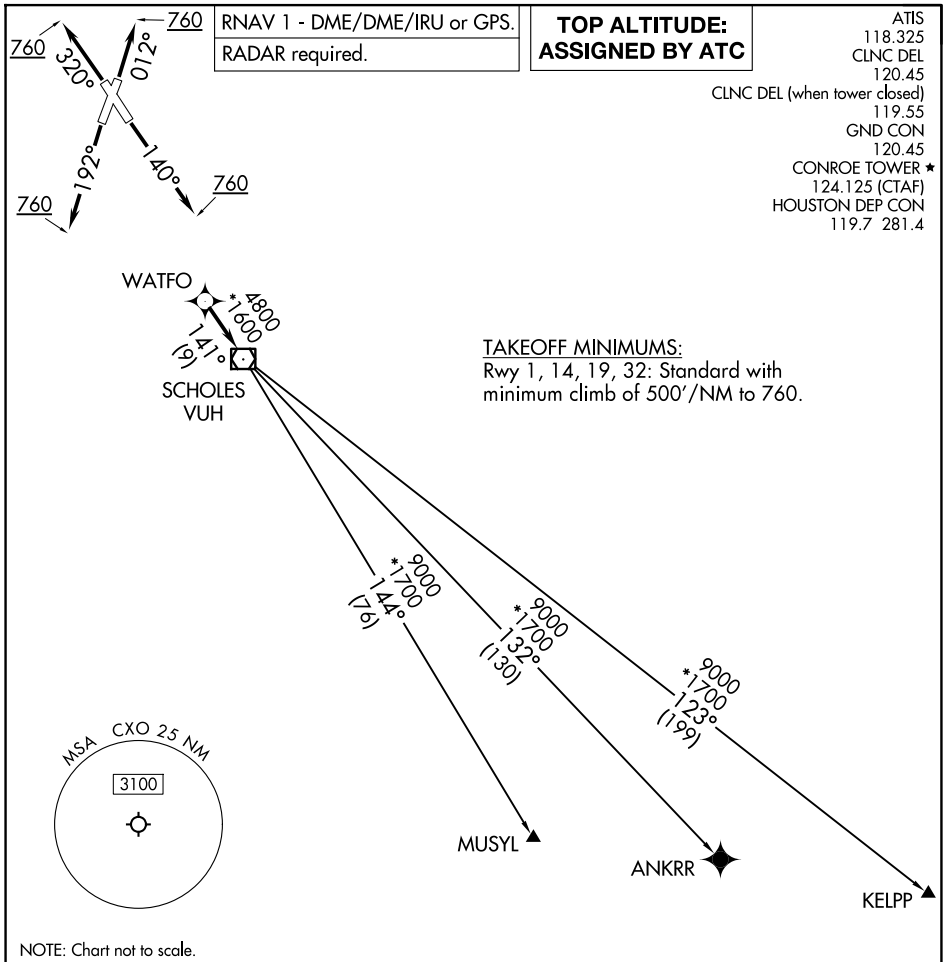


# WATFO SIX DEPARTURE (RNAV)



RNAV 1 - DME/DME/IRU or GPS.  
RADAR required.

**TOP ALTITUDE:  
ASSIGNED BY ATC**

ATIS  
118.325  
CLNC DEL  
120.45  
CLNC DEL (when tower closed)  
119.55  
GND CON  
120.45  
CONROE TOWER ★  
124.125 (CTAF)  
HOUSTON DEP CON  
119.7 281.4

**TAKEOFF MINIMUMS:**  
Rwy 1, 14, 19, 32: Standard with  
minimum climb of 500'/NM to 760.

SC-5, 15 MAY 2025 to 12 JUN 2025

SC-5, 15 MAY 2025 to 12 JUN 2025

NOTE: Chart not to scale.

## DEPARTURE ROUTE DESCRIPTION

**TAKEOFF RUNWAY 1:** Climb on heading 012° to 760, for RADAR vectors to WATFO, thence. . . .  
**TAKEOFF RUNWAY 14:** Climb on heading 140° to 760, for RADAR vectors to WATFO, thence. . . .  
**TAKEOFF RUNWAY 19:** Climb on heading 192° to 760, for RADAR vectors to WATFO, thence. . . .  
**TAKEOFF RUNWAY 32:** Climb on heading 320° to 760, for RADAR vectors to WATFO, thence. . . .  
 . . . on track 141° to VUH VOR/DME, then on (transition). Maintain ATC assigned altitude.  
 Expect filed altitude 10 minutes after departure.

ANKRR TRANSITION (WATFO6.ANKRR)  
KELPP TRANSITION (WATFO6.KELPP)  
MUSYL TRANSITION (WATFO6.MUSYL)