

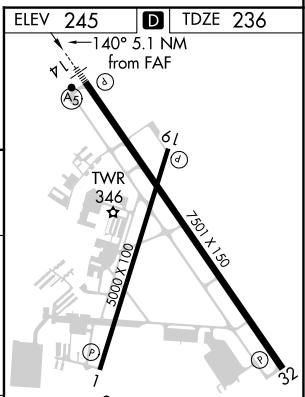
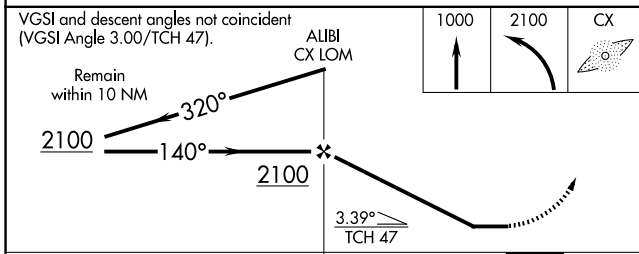
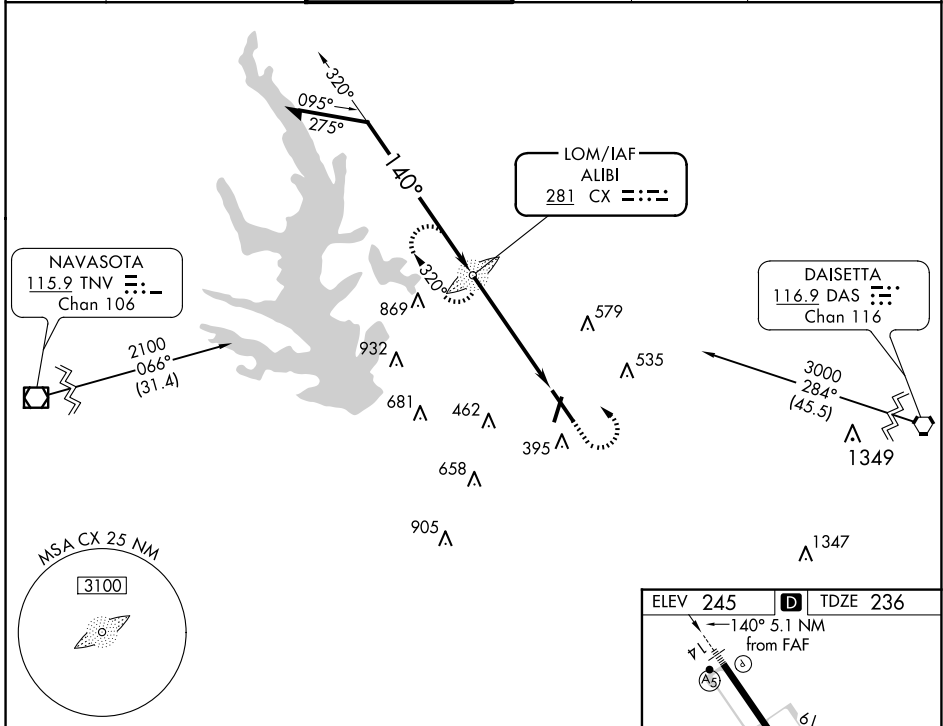
LOM CX 281	APP CRS 140°	Rwy Idg TDZE Apt Elev	7501 236 245
----------------------	------------------------	-----------------------------	---

NDB RWY 14

CONROE/NORTH HOUSTON RGNL (CXO)

	MALSR 	MISSED APPROACH: Climb to 1000 then climbing left turn to 2100 direct ALIBI LOM and hold.

ATIS 118.325	HOUSTON APP CON 119.7 281.4	CONROE TOWER * 124.125 (CTAF) 0	GND CON 120.45	CLNC DEL 120.45	CLNC DEL 119.55 (When twr closed)
------------------------	---------------------------------------	---	--------------------------	---------------------------	--



CATEGORY	A	B	C	D
S-14	880-3/4	644 (700-3/4)	880-1 3/8	644 (700-1 3/8)
CIRCLING	880-1	635 (700-1)	880-1 7/8	960-2
			635 (700-1 7/8)	715 (800-2)

FAF to MAP 5.1 NM					
Knots	60	90	120	150	180
Min:Sec	5:06	3:24	2:33	2:02	1:42

SC-5, 15 MAY 2025 to 12 JUN 2025

SC-5, 15 MAY 2025 to 12 JUN 2025