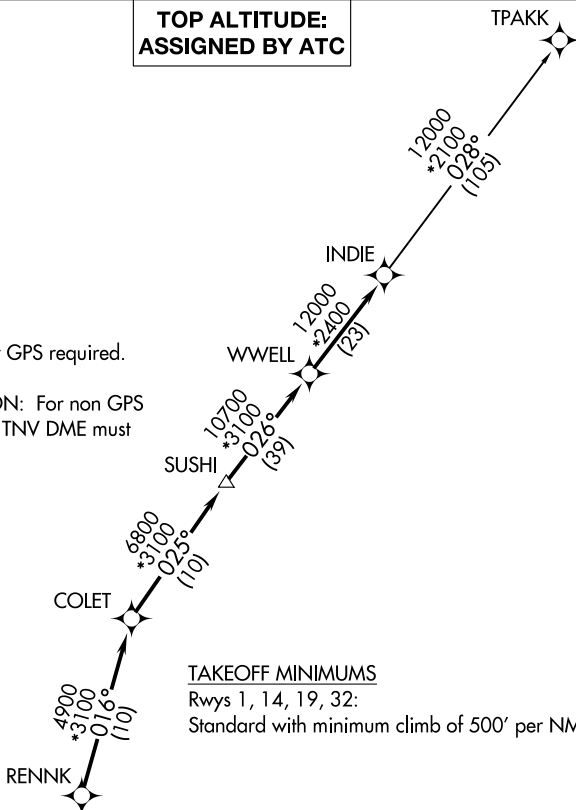


INDIE EIGHT DEPARTURE (RNAV)

ATIS
 118.325
 CLNC DEL
 120.45
 CLNC DEL
 119.55 (when twr closed)
 GND CON
 120.45
 CONROE TOWER ★
 124.125 (CTAF)
 HOUSTON DEP CON
 119.7 281.4

**TOP ALTITUDE:
 ASSIGNED BY ATC**

NOTE: RADAR required.
 NOTE: DME/DME/IRU or GPS required.
 NOTE: RNAV 1.
 NOTE: TPAKK TRANSITION: For non GPS equipped aircraft TNV DME must be operational.



TAKEOFF MINIMUMS

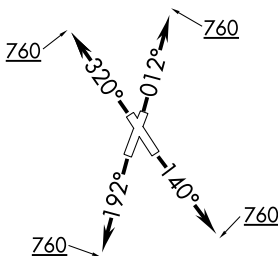
Rwys 1, 14, 19, 32:

Standard with minimum climb of 500' per NM to 760.

DEPARTURE ROUTE DESCRIPTION

TAKEOFF RUNWAY 1: Climb on heading 012° to 760 for RADAR vectors to RENNK, thence
TAKEOFF RUNWAY 14: Climb on heading 140° to 760 for RADAR vectors to RENNK, thence
TAKEOFF RUNWAY 19: Climb on heading 192° to 760 for RADAR vectors to RENNK, thence
TAKEOFF RUNWAY 32: Climb on heading 320° to 760 for RADAR vectors to RENNK, thence
 on track 016° to COLET, then on track 025° to SUSHI, then on track 026° to WWELL, then on track 026° to INDIE, then on (transition). Maintain ATC assigned altitude. Expect filed altitude 10 minutes after departure.

TPAKK TRANSITION (INDIE8.TPAKK)



NOTE: Chart not to scale.